

# Linemen & General Tools



# Table of Contents

<b>Product</b>	<b>Code</b>	<b>Page</b>
Klein Climbing Irons	37	<u>4</u>
Klein Bare Climbers	38	<u>4</u>
Leather T Climbing Pads	65200637	<u>4</u>
Klein Replacement Leather Pads	39	<u>4</u>
Klein Replacement Gaffs	42	<u>4</u>
Klein Replacement Calf Straps	41	<u>5</u>
Klein Replacement Ankle Straps	40	<u>5</u>
Aluminium Climbing Pads	44	<u>5</u>
Velcro Pads for Climbers	43	<u>5</u>
Milwaukee Pole Drill & Impact Wrench	ONEFHIWH716-0X	<u>6</u>
SDS / Hex Wood Auger Drill Bits	OLC22	<u>6</u>
Linemans Pliers	46	<u>6</u>
Marvel Knife	50	<u>6</u>
Podger Spanners	49	<u>7</u>
4 in 1 Ratchet Podger	120	<u>7</u>
Adjustable Spanners Draper Expert	ADJ	<u>7</u>
Pipe Wrenches Stilsons	48	<u>7</u>
Eclipse High Tensile Bolt Cutters	119	<u>8</u>
Fiberglass Claw Hammers	54	<u>8</u>
Lump/ Club Hammer	55	<u>8</u>
Sledge Hammer	56	<u>8</u>
Crowbar / Wrecking Bars	63	<u>8</u>
ARS Hand Pruning Saw	ARS-UVR-32PRO	<u>9</u>
ARS Folding Hand Saw	65200671	<u>9</u>
Wolf Telescopic Lopers	65	<u>9</u>
Bow Saw	77	<u>10</u>
Fencing Pliers	57	<u>10</u>
Barb Wire Tensioner	58	<u>10</u>
Gripple Barbwire Tool	59	<u>11</u>
Gripple Barbwire Repair Crimps	60	<u>11</u>
Gripple Tee Joint	62	<u>11</u>
Gripple Wire Repair Crimp	61	<u>11</u>
Canvas Tool Bag	66	<u>12</u>
Green Tool Bag	68	<u>12</u>
Cresto Tool VinylBag	67	<u>12</u>
Deep Bolt Bag	GTSK2	<u>12</u>
Cresto Leather Tool Frog 7 Piece	9333	<u>13</u>
Cresto Leather Tool Frog 6 Piece	9334	<u>13</u>

## Linemen & General Tools

<b>Product</b>	<b>Code</b>	<b>Page</b>
Klein Round Tool Buckets	71	<u>13</u>
Klein Oval Tool Bucket 5144S	72	<u>13</u>
Klein Mewp Oval Tool Bucket	73	<u>14</u>
Mewp /Ariel Truck Tool Tray Wide	75	<u>14</u>
Mewp / Ariel Truck Tool Tray Deep	76	<u>14</u>
Two Way Radios Licensed	122	<u>15</u>
License Free Two Way Radios	123	<u>15</u>
Lone Worker Protection	124	<u>15</u>
Bushnell Compact Binoculars 7-15 x25	90306	<u>16</u>
Laser Rangefinder	LR1	<u>16</u>
Sievert Heat Shrink Torch	125	<u>17</u>
Sievert Soft Flame Burner	127	<u>17</u>
Sievert Heat Shrink Nozzle	126	<u>17</u>
Pole Numbering Systems	135	<u>17</u>
Fibreglass Ladders	FGL	<u>18</u>
Ladder M8rix Safety Device	216328	<u>19</u>
Ladder Wheels	216327	<u>19</u>
Fibreglass Step Ladders	216329	<u>20</u>
Fibreglass Grp Scaffolding	216330	<u>20</u>
Milwaukee 18V Drill	86	<u>21</u>
Hiliti 36V SDS Hammer Drill	87	<u>21</u>
Makita 18V 1/2" Drive Impact Gun	88	<u>21</u>
Heavy Duty 18v Angle Grinder	89	<u>22</u>
Stihl TS 410 Cut Off Saw	90	<u>22</u>
Bacho 24 Piece 1/2" Drive Socket Set	92	<u>22</u>
Bacho Deep Impact Sockets	91	<u>22</u>



### Klein Climbing Irons

Klein Climbers With Leather Pads



### Klein Bare Climbers

Klein Climbing Irons Bare No Pads or Straps



### Klein Replacement Leather Pads

Replacement Leather Pads



### Leather T Climbing Pads

Premium leather and thick felted wool make for a high-quality pad that beats other basic pads for comfort, without adding much weight or bulk.



### Klein Replacement Gaffs

Klein Replacement Gaffs



### Klein Replacement Calf Straps

Klein Replacement Calf Straps

Standard 22" / Large 26"



### Klein Replacement Ankle Straps

Klein Replacement Ankle Straps

Standard 22" and Large 26"



### Velcro Pads for Climbers

Velcro Pads for Climbers with metal loop to ensure a tight fit without the need to adjust during the working day, A metal plate behind calf strap will stop twisting and tearing of the pad.



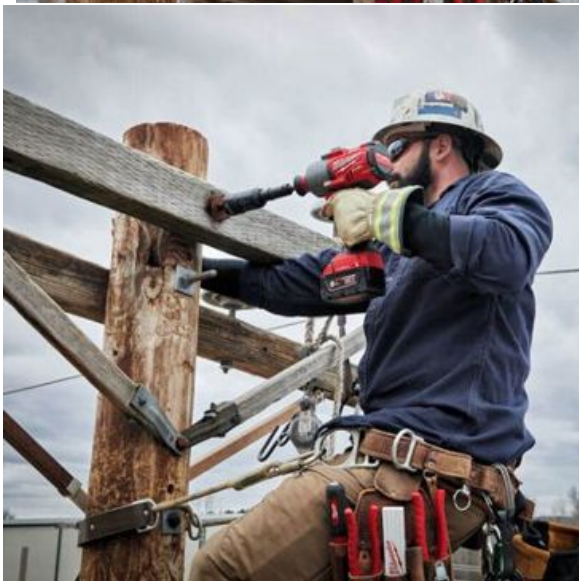
### Aluminium Climbing Pads

These Aluminum Leg Pads are designed for climbers who want extreme leg support and comfort. They're lightweight and won't wear out like leather pads.



### Milwaukee Pole Drill & Impact Wrench

- MILWAUKEE M18 FUEL 7/16" hex utility high torque impact wrench with ONE-KEY giving you the power when needed in larger wood application.
- With up to 1,193 Nm max torque, more power to effortlessly complete your applications or the removal of rusted and corroded hardware.
- Equipped with a QUIK-LOK™ chuck, providing faster and easier bit changes.
- The integrated lanyard loop allows you to easily transfer and store the tool.



### SDS / Hex Wood Auger Drill Bits

German Made High Quality Wood Augers  
SDS or Hex Fitting

- 12mm x 460mm
- 14mm x 460mm
- 16mm x 460mm
- 18mm x 460mm
- 20mm x 460mm
- 22mm x 460mm
- 24mm x 460mm



### Linemans Pliers

The Milwaukee 6 IN 1 Lineman's pliers features a high-leverage design for maximum cutting power and precision. Backed by Milwaukee's Limited Lifetime Warranty, feature six application specific designs: Reaming, Bolt Cutter, Wire Cutting, Nail Pulling, Pliers, Fish Tape Puller.



### Marvel Knife

High quality stainless steel double edged blade, Rubber non-slip grooved handle. Supplied in plastic sheath with safety lock device with whetstone.



## Podger Spanners

Podger Spanners Heavy Duty Drop Forged

Part No	Size
RPS1013	10 x 13mm
RPS1317	13 x 17mm
RPS1719	17 x 19mm
RPS1921	19 x 21mm
RPS1924	19 x 24mm
RPS2430	24 x 30mm
RPS2730	27 x 30mm
RPS3032	30 x 32mm



## 4 in 1 Ratchet Podger



17/21 & 19/24  
Four sizes in one

## Adjustable Spanners Draper Expert

*Expert Quality*

Part No	Size	Jaw Opening
ADJ150	150mm (6")	20mm
ADJ200	200mm (8")	24mm
ADJ250	250mm (10")	29mm
ADJ300	300mm (12")	34mm
ADJ375	375mm (15")	43mm
ADJ460	460mm (18")	58mm
ADJ600	600mm (24")	70mm



## Pipe Wrenches Stilsons

Bacho Professional Stillson Pipe Wrench

Part No	Size	Jaw Opening
PW200	200mm (8")	20mm
PW250	250mm (10")	25mm
PW300	300mm (12")	32mm
PW350	350mm (14")	38mm
PW450	450mm (18")	50mm
PW600	600mm (24")	63mm



## Eclipse High Tensile Bolt Cutters



Part No	Size	Cutting Capacity
EBC14	14"	5mm
EBC18	18"	6.4mm
EBC24	24"	7.9mm
EBC30	30"	9.5mm
EBC36	36"	11.1mm
EBC42	42"	13mm

## Fiberglass Claw Hammers

Forged from fine grain carbon steel correctly hardened, tempered with a fully polished head  
Fiberglass fitted with a comfortable shock absorbing vinyl grip.  
16oz or 20oz



## Lump/ Club Hammer

Fibreglass Shafted Club Hammer.  
Forged from fine grain carbon steel correctly hardened and tempered with a black painted head.  
Fibreglass shaft fitted with comfortable shock-absorbing rubber grip.



## Sledge Hammer

Fibreglass Shafted Sledge Hammer. Forged from fine grain carbon steel correctly hardened and tempered with a black painted head.  
Fibreglass shaft fitted with comfortable shock-absorbing rubber grip.  
14LB



## Crowbar / Wrecking Bars

Heel and Point Wrecking / Crow Bars  
Available in 5ft or 6ft Lengths



## ARS Hand Pruning Saw

This is the premium pruning saw on the market the cutting teeth are impulse hardened – this extends the blade life by up to 3 times that of a conventional saw.



## ARS Folding Hand Saw

The ARS-GR-17 is the curved blade ,high-carbon steel and the hard-chrome plating ensures this unique patented blade continues to produce remarkably clean cuts even after extended use. The precision ground teeth have a razor edge resulting in a fast, easy pulling action which requires far less effort than conventional saws. Not to mention the Saw was developed with curvature ground teeth and the ARS TURBOCUT design. The GR-17 folds down to just 207mm and weighs only 175g, meaning storage is easy and convenient for all users.



## Wolf Telescopic Loppers

The Wolf Power Cut range combines precision and power to equal exceptional cutting performance. The Power Cut Anvil Lopper features ergonomic handles, and a 750mm handle length.

- 3 times more power due to the new cutting head technology
- Ergonomic 2-K plastic handles with soft lining
- For branches up to max. 45 mm Ø
- Non-stick blades





## Bow Saw

Bacho heavy duty bow saw made of lightweight tubing.

Complete with a 600mm hardpoint blade for cutting dry wood.

Green wood blades are also available for this model.

## Fencing Pliers

The Draper Fencing Plier Expert Quality, manufactured from carbon steel with smoothly ground and polished head.

Head incorporates a striking face; staple removing hook; pincer and clamp on top jaw; grips on inside of handles for straining and twisting wire and two shear type wire cutters.

Cushion grip handle



## Barb Wire Tensioner

For tensioning wire (including barbed) up to 4mm diameter before stapling onto wooden fencing posts.

Hardened and tempered carbon steel. 600mm long handle



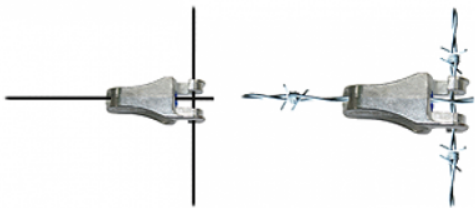
### Gripple Barbwire Tool

- 10:1 mechanical advantage helps you apply the same tension, with less effort
- Gear driven, long handles for increased leverage
- Quick release cam to position the tool easily on the wire



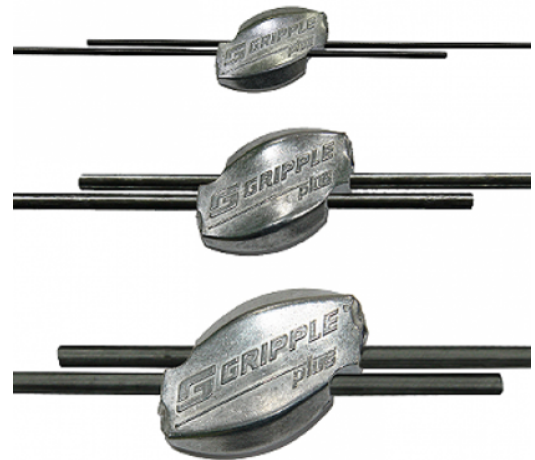
### Gripple Barbwire Repair Crimps

*Designed to join 2.50mm 1/2" mild steel barbed wire*



### Gripple Tee Joint

*The quick and easy way to tie-off at the start or end of a fence*



### Gripple Wire Repair Crimp

*A range of wire joiners and tensioners for all types and sizes of wire*

- Use on plain, barbed or electric wire and, on all types of stock fence
- Adjustable and can be re-tensioned year-after-



### Canvas Tool Bag

Deep Canvas Tool Bag  
Front Pocket Nylon Straps and Buckles



### Green Tool Bag

Green Heavy Duty Canvas Deep Tool Bag  
30cm x 36cm x 10cm



### Cresto Tool Vinyl Bag

Cresto Vinyl Tool Bag Deep With Flap Cover  
28cm Tall x 25cm Wide x 10cm Deep



### Deep Bolt Bag

Reinforced Deep Bolt Bag with tool fastening pocket  
H 38cm, W 25cm, D 10cm



### Cresto Leather Tool Frog 7 Piece 9333

Tool holder in leather for seven tools, of which three are for insulation tools



### Cresto Leather Tool Frog 6 Piece 9334

Tool holder in leather for six tools with hammer holder



### Klein Round Tool Buckets

- Rope handle reinforced with leather for water resistance and strength
- Black molded polypropylene bottom protects against corrosion.
- Variations: 5106 Rope      5106S Rope With snap Hook



### Klein Oval Tool Bucket 5144S

No. 6 canvas.  
Tripod suspension for greater stability.  
Black molded polypropylene bottom.  
Rope handle.



## Klein Mewp Oval Tool Bucket

- 15 Pockets
- Heavy duty canvas.
- Black molded polypropylene bottom.
- Two nylon 66 polymer hooks included.
- ABS hooks are resistant to temperature changes.
- Made in the USA.

## Mewp /Ariel Truck Tool Tray Wide

A mult-use tray of special low density polyethylene is very durable even in cold weather. High density polyethylene support brackets for added strength. Fits buckets with or without liners.

Size Overall: 480mm L x 200mm D x 200mm W

Color: Grey

Weight: 3.25kg



## Mewp / Ariel Truck Tool Tray Deep

A mult-use tray of special low density polyethylene is very durable even in cold weather. High density polyethylene support brackets for added strength. Fits buckets with or without liners.

Size Overall: 380mmL x 180mm W x 430mm D

Color: Grey

Weight: 4.23kg



## Two Way Radios Licensed

Two Way Professional Licensed Radios  
We can supply a range of two way radios  
IP45 Rated UHF & VHF

## License Free Two Way Radios

- Licence-free (PMR446) weather-proof radios
- 10Km range, **Clear Line of Site**
- 8 channels, 10 call tones, handsfree function, LED Torch and Vibrate Alert
- Rechargeable NiMH batteries (supplied)
- Scan/Monitor function
- Handy carry case with accessories



## Lone Worker Protection

**The SPOT Satellite GPS Messenger not only provides an essential means of communication. SPOT works virtually anywhere on the earth, even when mobile phones won't.**

The most important feature of SPOT is its ability to notify emergency services of your GPS location when you need assistance. Once the SOS button is activated SPOT will send your co-ordinates to the local emergency services and will continue to send the distress signal every 5 minutes until cancelled or the batteries are depleted.

## Bushnell Compact Binoculars 7-15x25



### Features

- Fully-coated optics for a brighter image
- Non-slip rubber armor absorbs shock while providing a firm grip
- Contemporary styling

### Specifications

- Magnification: 7-15x25
- Objective Lens Diameter (mm): 25mm
- Close Focus (m): 1.8m
- Lens Coating: Fully Coated
- Field of View (m@1000m): 87m
- Adapt to Tripod: No
- Eyecups: Fold Down
- Eye Relief: 12mm
- Focus System: Center
- Exit Pupil (mm): 3.5mm at 7x / 1.6mm at 15x
- Prism Glass: BK-7
- Weight (g): 315g
- Size Class: Compact

## Laser Rangefinder

- High Quality Rangefinder with Long Measurement Range: 5-540 Yards (500+meters)
- High-quality 6x Monocular with Multilayer Coating for Bright, Clear Images
- Advanced PinSensor Technology for measuring overlapping subjects:
- First Target Priority mode displays the distance of the closest subject -
- Priority mode displays that of the farthest subject - useful in wooded areas.
- Scan mode - useful to see the distance of hazards
- Includes: Quality Bag, Strap and Microfiber Cloth + FREE Battery
- Rainproof Construction and 1 Year Manufacturer Warranty







## Sievert Heat Shrink Torch

The Powerjet is the most flexible hand-held torch system and provides everything the professional requires.

With many unique features, these blowtorches can be used for brazing, soft soldering, heat-shrinking, heating and dismantling work.

The system can be used with several gases including Propane, Butane, Propane/Butane mix, Ultragas, MAPP® and Ultramapp for extreme heat

## Sievert Soft Flame Burner

Sievert 8710 Powerjet Gas Blow Torch Soft Flame Burner for shrinking and heating jobs.

Powerful and wind stable soft flame



## Sievert Heat Shrink Nozzle

Sievert 8708 Powerjet Gas Blow Torch Soft Flame Burner for shrinking and heating jobs. Powerful and wind stable soft flame.

## Pole Numbering Systems

Pole Tagging, Warning Signs and Substation Numbering etc.

High quality systems to suit any application. Co-extruded E-Z have a 25 year warranty and cannot fade.

Yellow and black polyethylene are co-extruded,

Numbers or letters are machined through the yellow to expose black digits that cannot wear or fade.

Tag holder system to fit horizontally or vertically in PVC or aluminium.

Tags can also be supplied in black digits



**SPECIFICATIONS**

**Non-conductive material Ladders**

Stiles 84 x 30mm Pultruded Channel Heavy Duty Section

Glassfibre Rung 30 x 30mm Pultruded Box Section

Aluminium Alloy Rung 32mm Diameter Round Castellated Rung Rungs Fitted At 250mm Centres

Complies With ANSI 14.5 & ESI 13.1 Kitemarked (where indicated) BS EN131 Designed For Heavy Industrial Use

2 Section Extending Ladders Push-up

(add an "R" before the last two numbers of the ordering code to add rope operation e.g GL2 R 09)

Ordering Codes for Rung Types

Glassfibre rungs	Round Alloy rungs	D shaped Alloy rungs	Length Closed	Extended Length	Rungs per Section	Approx. Weight	<sup>a</sup> Ext	
							Int width Top Sect	Width Bottm Sect
AFD 09	GL2 09	DGL2 09	2.35m	4.05m		914kg	329mm	420mm
AFD 12	GL2 12	DGL2 12	3.05m	5.55m		1218kg	329mm	420mm
AFD 14	GL2 14	DGL2 14	3.55m	6.30m		1422kg	329mm	420mm
AFD 16	GL2 16	DGL2 16	4.10m	7.55m		1628kg	329mm	420mm
AFD 19	GL2 19	DGL2 19	4.83m	8.85m		1932kg	329mm	420mm



**Pole Bow / Strap**



**Rocker Feet Option**

## Ladder M8rix Safety Device

The Ladder M8rix is a simple safety device that sits under the feet of your ladder, preventing it from slipping.

Made from durable moulded Polypropylene, the safety device consists of a stainless steel plate secured by galvanised capping screws.

The fine metal grips situated on the underside of the **Ladder M8rix** hold the device in place thus helping to prevent any slippage on the ground surface.



PAVING



CONCRETE



TARMAC



GRASS



GRAVEL



ICE/SNOW



WOOD



CARPET



## Ladder Wheels

The D wheel is a purpose built ladder wheel that uniquely grips in all directions providing unprecedented levels of safety.

- Comes with fittings
- Ladder instantly secures at the top before climbing
- D Wheels roll smoothly up the wall keeping ladder under control
- D Wheel are softer and have added grip over the more conventional wheel but can still roll and steer easily



## Fibreglass Step Ladders

Superb fibreglass stepladder conforming to EN131 and all international electrical resistance standards . Heavy duty fibreglass sides with double rivetted slip resistant alloy treads and incorporating non slip rubber feet, strong locking metal braces and a tool tray top. The ideal solution for site work!

- Certified to EN131 European Safety Standard
- Non Conductive to 30,000 volts
- Step consists of 3 Aluminium treads & a top plastic tool tray

4,5,6,8,10 Tread Available

## Fibreglass Grp Scaffolding

### Options

1. Base plates
2. Inclined ladders
3. Triple guard rails
4. Folding frames for use in vessel structures. The complete tower will pass into 500mm dia. opening

### Features

1. Hatch platforms
2. Internal access
3. All GRP except castors
4. Non conductive
5. Zone 1 approved

**Platform Lengths** 1.8m, 2.5m, 3.0m.

**Narrow width** 740mm

**Double width** 1350mm

- Non conductive (tested up to 100kv)
- Zone-one approved (Spark Resistant)
- Chemical resistant
- Non-corrosive
- Durable / Lightweight (50% lighter than traditional steel tubing)
- Can be used with traditional steel fittings



## Just A Small Selection of Power Tools We Stock



### Milwaukee 18V Drill

**3 Year Warranty When Registered Online**

- High powered motor - gives corded tool performance
- Powerful hammer mechanism: delivers 2.8 J of impact energy
- All metal gear case - optimum seating of the gears for enhanced service life
- 4-mode operation: rotary hammer, hammer only, rotation only and variolock for maximum versatility
- FIXTEC system - keyless chuck changing
- Fuel gauge displays remaining charge
- REDLITHIUM-ION battery pack delivers up to 2x more run time,
- up to 20% more power,
- up to 2x more battery life and operates better down to -20°C

### Hilti 36V SDS Hammer Drill

Voltage	36 V
Battery capacity	6 Ah
Battery type	Li-ion
Triaxial vibration value for hammer drilling into concrete (ah,HD)	11 m/s <sup>2</sup> <sup>1</sup>
Single impact energy	3.6 J
Rotation speed gear 1 under no load	850 tours/minute
Full hammering frequency	4500 impacts/minute



### Makita 18V 1/2" Drive Impact Gun

Battery type Lithium -ion  
 Voltage - 18v  
 Drive Square - 1/2"  
 Vibration fastenning bolt - 9 m/sec<sup>2</sup>  
 Battery quantity (3.0 Ah) - 2  
 No load speed - 0 - 2100 rpm  
 Vibration K factor - 1.5 m/sec<sup>2</sup>  
 Noise sound power - 101 dB(A)  
 Noise sound pressure - 90 dB(A)  
 Noise K factor - 3 dB(A)  
 Impacts - 0 - 3200 ipm

## Heavy Duty 18v Angle Grinder



Has brushless POWERSTATE™ motor for ten times more motor life and up to 25% more run time with power to grind. REDLINK PLUS™ intelligence system delivers the most advanced digital overload protection for tool and battery and uniquely enhances the tool performance under load. Fuel gauge displays remaining charge. REDLITHIUM-ION™ batteries deliver two times more run time, up to 20% more power, and two times more battery life. No Load Speed: 0-8,500/min. Disc Diameter: 115mm ,Cutting Depth: 28mm Weight: 1.8kg

## Stihl TS 410 Cut Off Saw

Fitted with a long-life filter system with cyclone pre-separation making on site maintenance unnecessary.

The Stihl TS 410 has extremely low vibration levels (3.9m/s<sup>2</sup>)

The high performance engine with stratified charge system,

For use with 300mm cutting wheel



## Bacho 24 Piece 1/2" Drive Socket Set

18 pcs 1/2" 6-pt Sockets 10 to 32 mm

1/2" Extension bar 5" & 10", 1/2" Universal joint , 1/2" T-adapter

1/2" Breaker bar with two components handle 10" with flexible 1/2" square

1/2" Ratchet with two components handle, 60 teeth

## Bacho Deep Impact Sockets

Bahco Deep Impact Socket Set of 1/2in deep impact sockets

Conforms to DIN 3121-G 12,5 ISO 1174 standards.

Sizes: 10, 11, 12 ,13 ,14, 15, 16, 17, 18, 19, 21, 22, 24, and 27mm.

