



VAC-TRUCK TOOLS & ACCESSORIES CATALOG



(206)283-5252

sales@seattlepump.com

16750 Redmond Woodinville Road NE Suite #C-101

Woodinville, Wa 98072

Table of Contents

Product	Page
1 1/2" SEWER CLEANING NOZZLES	<u>3</u>
ENZ 1-1/2" Bulldozer Nozzle	<u>3</u>
1 1/4" SEWER CLEANING NOZZLES	<u>4</u>
ENZ 1-1/4" Drainage Channel Nozzle	<u>4</u>
ENZ 1-1/4" Bulldozer Nozzle	<u>5</u>
ENZ 1-1/4" Bulldog® Antiblast Nozzle	<u>5</u>
ENZ 1-1/4" Flounder Nozzle	<u>6</u>
ENZ 1-1/4" Ejector Nozzles	<u>6</u>
ENZ 1-1/4" Bulldog Recycling Rotating Nozzles	<u>7</u>
ENZ 1-1/4" Rotopuls Vibration Nozzle	<u>7</u>
ENZ 1-1/4" KBRV Rotating Combination Forward Nozzles	<u>8</u>
ENZ 1-1/4" Radial Rotating 75° Nozzles	<u>8</u>
ENZ 1-1/4" Grenade-Bomb Nozzles	<u>9</u>
ENZ 1-1/4" KBR Rotating Combination Nozzles	<u>10</u>
ENZ 1-1/4" HRV Semi-Radial Forward Rotating Nozzles	<u>10</u>
ENZ 1-1/4" HRH Semi-Radial Rotating Nozzles	<u>11</u>
ENZ 1-1/4" Turbopuls Vibration Nozzle	<u>11</u>
ENZ 1-1/4" Chisel Point Nozzle	<u>12</u>
1" SEWER CLEANING NOZZLES	<u>13</u>
ENZ 1" Bulldog® Antiblast Nozzle	<u>13</u>
ENZ 1" Bulldog Recycling Rotating Nozzles	<u>13</u>
ENZ 1" Bulldozer Nozzle	<u>14</u>
1" Warthog Nozzles	<u>15</u>
ENZ 1" KBRV Rotating Combination Forward Nozzle	<u>15</u>
ENZ 1" Rotopuls Vibration Nozzle	<u>16</u>
ENZ 1" KBR Rotating Combination Nozzles	<u>17</u>
ENZ 1" HRV Semi-Radial Forward Rotating Nozzles	<u>17</u>

Table of Contents

Product	Page
ENZ 1" HRH Semi-Radial Rotating Nozzles	<u>18</u>
ENZ 1" Flounder Nozzle	<u>18</u>
ENZ 1" Ejector Nozzles	<u>19</u>
ENZ 1" Radial Rotating 75° Nozzles	<u>19</u>
ENZ 1" Grenade-Bomb Nozzles	<u>20</u>
ENZ 1" Drainage Channel Nozzle	<u>21</u>
ENZ 1" Turbopuls Vibration Nozzle	<u>21</u>
ENZ 1" Chisel Point Nozzle	<u>22</u>
ENZ 1" Standard Cleaning Nozzles	<u>22</u>
3/4" SEWER CLEANING NOZZLES	<u>23</u>
ENZ 3/4" Bulldozer Nozzle	<u>23</u>
ENZ 3/4" Bulldog Recycling Rotating Nozzles	<u>23</u>
ENZ 3/4" KBRV Rotating Combination Forward Nozzles	<u>24</u>
ENZ 3/4" KBR Rotating Combination Nozzles	<u>24</u>
ENZ 3/4" HRV Semi-Radial Forward Rotating Nozzles	<u>25</u>
ENZ 3/4" HRH Semi-Radial Rotating Nozzles	<u>25</u>
ENZ 3/4" Radial Rotating 75° Nozzles	<u>26</u>
ENZ 3/4" Rotopuls Vibration Nozzle	<u>26</u>
ENZ 3/4" Turbopuls Vibration Nozzle	<u>27</u>
ENZ 3/4" Chisel Point Nozzle	<u>28</u>
ENZ 3/4" Grenade-Bomb Nozzles	<u>29</u>
ENZ 3/4" Drainage Channel Nozzle	<u>29</u>
ENZ 3/4" Flounder Nozzle	<u>30</u>
1/2" SEWER CLEANING NOZZLES	<u>31</u>
ENZ 1/2" Flounder Nozzle	<u>31</u>
ENZ 1/2" Bulldog Recycling Rotating Nozzles	<u>31</u>
1/2" Warthog Nozzles	<u>32</u>

Table of Contents

Product	Page
ENZ 1/2" Radial Rotating 75° Nozzles	<u>33</u>
ENZ 1/2" KBRV Rotating Combination Forward Nozzles	<u>33</u>
ENZ 1/2" Rotopuls Vibration Nozzle	<u>34</u>
ENZ 1/2" Turbopuls Vibration Nozzle	<u>34</u>
ENZ 1/2" KBR Rotating Combination Nozzles	<u>35</u>
ENZ 1/2" HRV Semi-Radial Forward Rotating Nozzles	<u>35</u>
NOZZLE EXTENSIONS	<u>39</u>
4-Wire Nozzle Extensions	<u>39</u>
Football Style Nozzle Extensions	<u>40</u>
6-Wire Nozzle Extensions	<u>41</u>
Wired Nozzle Skid Extension	<u>42</u>
Long 10 Leg Proofer Nozzle Extension	<u>42</u>
Short 10 Leg Proofer Nozzle Extension	<u>43</u>
Finned Nozzle Extension	<u>44</u>
3/4"-1 1/4" Bullet Nozzle Skid Extension	<u>44</u>
Finned Nozzle Skid Extension	<u>45</u>
Finned Nozzle Extension with Wheels	<u>45</u>
1 1/4" SEWER CLEANING HOSE	<u>46</u>
Sewer Cleaning Hose 1 1/4"	<u>46</u>
1" CLEANING HOSE	<u>47</u>
Sewer Cleaning Hose 1"	<u>47</u>
3/4" SEWER CLEANING HOSE	<u>48</u>
Sewer Cleaning Hose 3/4"	<u>48</u>
5/8" SEWER CLEANING HOSE	<u>49</u>
Sewer Cleaning Hose 5/8"	<u>49</u>
1/2" SEWER CLEANING HOSE	<u>50</u>
Sewer Cleaning Hose 1/2"	<u>50</u>

Table of Contents

Product	Page
ROOT SAWS, MOTORS, KITS AND SKIDS	<u>51</u>
Standard Concave Root Saw Blades	<u>51</u>
Concave Root Saw Blade Only Standard	<u>52</u>
Concave Root Saw Blade Only Heavy Duty	<u>53</u>
Concave Saw Blade without hub	<u>54</u>
Heavy Duty Concave Root Saw Blades	<u>54</u>
Heavy Duty Puma Tooth Concave Root Saw Blades	<u>55</u>
Concave Supreme Saw Blade with Hub	<u>55</u>
Concave Root Saw Standard	<u>56</u>
Concave Root Saw Heavy Duty	<u>57</u>
Super Duty Large Diameter Concave Root Saws with Spokes	<u>58</u>
Carbide Tipped Concave Root Saws	<u>58</u>
Standard Flat Root Saw Blades	<u>59</u>
Heavy Duty Flat Root Saw Blades	<u>59</u>
Flat Root Saw Blade Only Standard	<u>60</u>
Flat Saw Blade without hub	<u>61</u>
4"-18" Flat Supreme Saw Blade with Hub	<u>61</u>
Flat Root Saw Blade Only Heavy Duty	<u>62</u>
Flat Root Saws Standard	<u>63</u>
Flat Root Saws Heavy Duty	<u>64</u>
Spiral Supreme Saw Blade with Hub	<u>65</u>
Spiral Saw Blade without hub	<u>65</u>
Skids for Hi-Torque Style Root Cutters	<u>66</u>
Lateral Root Cutters	<u>66</u>
Root Cutter Skids	<u>67</u>
Mainline Root Cutter Kits	<u>68</u>
Hydraulic Root Cutter Saw Kits	<u>69</u>

Table of Contents

Product	Page
Hi-Torque Hydraulic Root Saw Cutter Kit and Motors	<u>70</u>
Lateral Root Cutter Kits	<u>71</u>
Skids for Puma Root Cutters	<u>71</u>
Skids for Round Body Puma Root Cutters	<u>72</u>
Saw Chuck	<u>73</u>
Saw Blade Hub	<u>73</u>
Coupling Nuts	<u>74</u>
BLADES AND SCRAPERS	<u>75</u>
3 Blade Cutter Chucks	<u>75</u>
Flat Blades for 3 Blade Cutter	<u>75</u>
Puma Double Sided Curved Blades for 3 Blade Cutter	<u>76</u>
Puma Fang Saw Cutter Heavy Duty	<u>76</u>
Flex Saw Blades	<u>77</u>
Combo Cutter with Curved or Flat Blades and Concave Root Saws	<u>77</u>
PVC Tap Cutters	<u>78</u>
Diamond Tap Cutters	<u>78</u>
Arrow Diamond Tipped Cutters	<u>79</u>
AUGERS	<u>80</u>
Square Bar Corkscrew	<u>80</u>
Augers	<u>81</u>
RODS	<u>82</u>
Premium Puma Rods	<u>82</u>
Puma Silver Rods	<u>83</u>
Power Rod Reels	<u>83</u>
RODS & RODDING TOOLS	<u>84</u>
Continuous Rod	<u>84</u>
Continuous Rod Transfer Rack	<u>84</u>

Table of Contents

Product	Page
RODDING TOOLS	<u>85</u>
Rod Hose Guides	<u>85</u>
Power Rod Drive Trailers	<u>86</u>
Special Boring Tools	<u>86</u>
Plumbers Rods and Tools	<u>87</u>
Root Cutter Hubs	<u>88</u>
Couplings for Square Stock Corkscrew	<u>88</u>
Rod, Tool and Adapter Couplings For Standard Root Saws	<u>89</u>
Rod, Tool and Adapter Couplings For Augers 2"-4"	<u>90</u>
Rod, Tool and Adapter Couplings For Augers 6" and Up	<u>91</u>
Rod, Tool and Adapter Couplings For Heavy Duty Root Saws	<u>92</u>
Rod, Tool and Adapter Couplings	<u>93</u>
Couplings for Sectional and Continuous Rod	<u>94</u>
Rod Pick Up Tools	<u>94</u>
Rod Spear Head Tools	<u>95</u>
Rod Pull Out and Turning Tools	<u>95</u>
Rod Assembly Tools	<u>96</u>
Adapter Rods	<u>96</u>
Power Rod Trailer Parts	<u>97</u>
Sewer Brush	<u>98</u>
Porcupines	<u>98</u>
MANHOLE HOOKS AND LIFTERS	<u>99</u>
Manhole Hooks	<u>99</u>
Southland Tool Manhole Hooks	<u>99</u>
MANHOLE HOOKS AND LIFTERS/PIPE PLUGS	<u>100</u>
Easement Roller	<u>100</u>
Sewer Pipe Plug Flow-Thru Style	<u>100</u>

Table of Contents

Product	Page
PIPE PLUGS	<u>101</u>
Sewer Pipe Plug Bag Style	<u>101</u>
GRIT CATCHERS, SPOONS AND GRABBERS	<u>102</u>
Foam Filled Poles Threaded Ends	<u>102</u>
Foam Filled Poles Snap Style	<u>102</u>
Debris Grit Basket To Use With Fiberglass Poles	<u>103</u>
Flat Traps	<u>103</u>
Debris Basket With 25' Rope	<u>104</u>
Debris Cylinders	<u>104</u>
Debris Grit Basket With 25' Rope	<u>105</u>
Aluminum Debris Traps With Lowering Rope	<u>105</u>
Debris Basket To Use With Fiberglass Poles	<u>106</u>
Aluminum Sand Trap	<u>106</u>
Sand Traps	<u>107</u>
Scoopa Screens	<u>107</u>
Aluminum Debris Traps Used With Fiberglass Poles	<u>108</u>
Scoopas	<u>108</u>
Debris Grabbers, Hooks, Claws, Shovels, Spoons, Magnets	<u>109</u>
Handy-Clams	<u>110</u>
Septic Cleaning Tools	<u>110</u>
Osh Style Wood Spoons	<u>111</u>
Catch Basin Spoon Assemblies	<u>111</u>
ROLLER GUIDES	<u>112</u>
Hose Protection Equipment	<u>112</u>
Top Manhole Roller	<u>112</u>
4-Way Roller	<u>113</u>
Safety Manhole Cover	<u>113</u>

Table of Contents

Product	Page
Fiberglass Hose Shoe	<u>113</u>
Nylon Rollers	<u>113</u>
Urethane Boom Roller	<u>113</u>
TIGER-TAIL HOSE GUIDES	<u>114</u>
Tyger-Tail Hose Guide	<u>114</u>
Heavy Duty Tiger Tail Guide	<u>114</u>
SMOKE BOMBS/DYE TABLETS	<u>115</u>
Dye Tablets and Powder	<u>115</u>
WASHDOWN GUNS	<u>116</u>
Standard Washdown Gun	<u>116</u>
Heavy Duty Washdown Gun	<u>116</u>
TUBES	<u>117</u>
12" Intake Debris Tube - Riveted Flange X Flange 12"-96" (Vac All®)	<u>117</u>
12" Welded Steel Flange & Crown -All Steel	<u>117</u>
12" Extension Tube - Flange X Flange - 12"-96"	<u>117</u>
8" Intake Tubes w/ Welded Aluminum Flanges (Vactor® and Vac-Con®)	<u>118</u>
8" Intake Tubes w/ Riveted Steel Couplers (Aquatech®)	<u>119</u>
8" Intake Tubes w/ Bandlock® Style Fittings (Super Products® / Guzzler®)	<u>119</u>
8" Intake Tube All Welded Steel - Flanges on Both Ends (Vactor®)	<u>120</u>
8" Hydro-Excavation Tubes - Female Coup-Hydro Kanaflex End w/ Riveted Female	<u>120</u>
8" Extension Tube All Steel -Welded Steel Flanges (Vactor)	<u>121</u>
8" Female Catch Basin Tube w/ Bandlock® Style Fittings (Super Products® /	<u>122</u>
8" Catch Basin All Steel Tube-Welded Steel Flange & Crown (Vactor®)	<u>122</u>
8" Male Catch Basin Tube w/ Bandlock® Style Fittings (Super Products® / Guzzler®)	<u>123</u>
8" Catch Basin Tubes w/ Welded Aluminum Flanges (Vactor® and Vac-Con®)	<u>124</u>
6" Intake Tubes w/ Aluminum Flanges (Vactor® and Vac-Con®)	<u>125</u>
6" Intake Tube Welded BandLok Ends All Aluminum	<u>125</u>

Table of Contents

Product	Page
6" Intake Tube Riveted Steel Flanges on both Ends All Aluminum	<u>126</u>
6" Intake Tube 18"-120" (Aquatech®)	<u>126</u>
6" Catch Basin Tubes w/ Riveted Steel Couplers (Aquatech®)	<u>127</u>
6" Catch Basin Tube Welded Flange & Crown All Aluminum	<u>127</u>
6" Catch Basin Tube Welded Crown & Male BandLok Ends All Aluminum	<u>128</u>
6" Catch Basin Tube Welded Crown & Female BandLok End All Aluminum	<u>128</u>
6" Catch Basin Tube Riveted Steel Flange & Crown Aluminum Tube	<u>129</u>
6" Flange Tube Welded Hydro Kanaflex End & Flange All Aluminum	<u>129</u>
TUBES & TUBE CLAMPS	<u>130</u>
6" Hydro-Excavation Tubes w/ Welded Male Bandlock® Style / Hydro Kanaflex End	<u>130</u>
6" Intake Tube 18"-120" (Aquatech®)	<u>130</u>
Quick Clamp (Vactor)	<u>130</u>
TUBE CLAMPS	<u>131</u>
Ring Clamp Band-Lok Style	<u>131</u>
4"-8" King Clamp Used On All Vacuum Machines	<u>131</u>
12" Intake Clamp (Vac-All)	<u>132</u>
DEBRIS HOSE, HOSE ENDS AND CLAMPS	<u>133</u>
Cuffed Debris Suction Hose	<u>133</u>
KanaFlex Style Hose	<u>133</u>
6"-8" Hose End Weldment (Vactor®)	<u>134</u>
3"-8" Steel Female BandLok Style Hose End	<u>134</u>
6"-8" Hose End Male Hose Shank with Gasket (Aquatech)	<u>135</u>
6"-8" Hose End Female Weld On with Gasket (Aquatech)	<u>135</u>
3"-8" Steel Male BandLok Style Hose End	<u>136</u>
Kana flex Hose End Clamps	<u>136</u>
HYDRO-EXCAVATION TOOLS	<u>137</u>
Hydro-Excavation Trigger Assembly	<u>137</u>

Table of Contents

Product	Page
Rip Saw Nozzles	<u>138</u>
Machete Hydro Ex Nozzle	<u>140</u>
Turbo Nozzles (Giant)	<u>141</u>
Hydro-X	<u>142</u>
Switchblade	<u>143</u>
Vac Truck Zip Tube	<u>145</u>
TRUCK PARTS	<u>146</u>
RAM Swivels	<u>146</u>
RAM Swivel Repair Kits	<u>146</u>
Float Ball	<u>147</u>
Float Ball 1/2" Rod Bore	<u>147</u>
Hycon Two-Way Ball Valves	<u>148</u>
Hycon Three-Way Ball Valves	<u>148</u>
Apollo Two-Way Ball Valve	<u>149</u>
Ball Valve Repair Kits	<u>149</u>
Brass Lever Valve	<u>150</u>
Vactor Filter Screens	<u>151</u>
Aquatech Filter Screens	<u>151</u>
Water Fill/Hydrant Hoes Assembly	<u>152</u>
Water fill hose male coupling	<u>152</u>
Blue Nylon Discharge Hose	<u>153</u>
Footage Counters	<u>153</u>
Throttle Cable	<u>154</u>
Replacement Wheel	<u>154</u>
Vacuum Gauge	<u>155</u>
Air Pressure Gauge	<u>155</u>
Sewer Machine Door Gaskets	<u>156</u>

Table of Contents

Product	Page
Pendant Control Box 7-8 Button Long Yellow	<u>157</u>
5 Button Yellow Pendant Control Box	<u>157</u>
Pendant Control Box 7 Button Black	<u>158</u>
7 Button Pendant Control Box	<u>158</u>
Pendant Control Kill Switch Boot	<u>159</u>
Pendant Control Kill Switch	<u>159</u>
Myers Pressure Regulator	<u>160</u>
F.E. Meyers Plunger Cups	<u>160</u>



ENZ 1-1/2" Bulldozer Nozzle

Available in:

ENZ Part#	Size NPT	Description	Nozzle Length and Width	Weight	GPM	PSI
50.150	1 1/2"	Bulldozer 6R X M10 2R X FanJet M10 1F X M10	25.8" X 11.8" X 6.7"	120.0 lbs.	105	3625



ENZ 1-1/4" Drainage Channel Nozzle

Available in:

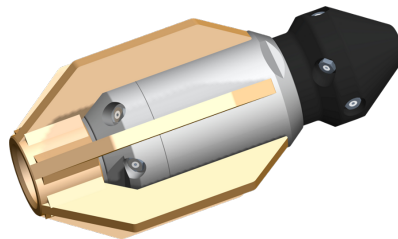
ENZ Part#	Size NPT	Description	Nozzle Length and Width	Weight	Jet Degrees	GPM	PSI
40.125A-SP0	1 1/4"	Drainage Channel 10R X M10	4.25" X 7.87"	25.33 lbs.	0°R	65	3626



ENZ 1-1/4" Bulldozer Nozzle

Available in:

ENZ Part#	Size NPT	Description	Nozzle Length and Width	Weight	GPM	PSI
50.125G	1 1/4"	Bulldozer 6R X M10 2R X FanJet M10 1F X M10	23.8" X 9.8" X 6.5"	83.35 lbs.	79	3625



ENZ 1-1/4" Bulldog® Antiblast Nozzle

Available in:

ENZ Part#	Size NPT	Description	Nozzle Length and Width	Weight	GPM	PSI
600.100B	1 1/4"	Bulldog® Antiblast 6R X M10 3 Side X M10 3 Side X M10	4.5" X 10.0"	17.00 lbs	53	1160



ENZ 1-1/4" Flounder Nozzle

Available in:

ENZ Part#	Size NPT	Description	Nozzle Length and Width	Weight	Jet Degrees	GPM	PSI
70.125	1 1/4"	Flounder 10R X M10	15.0" X 7.1" X 2.8"	42.22 lbs.	15°R/ 7.5°R /0°R	66	3625

ENZ 1-1/4" Ejector Nozzles



Available in:

ENZ Part#	Size NPT	Description	Nozzle Length and Width	Weight	GPM	PSI
80.125	1 1/4"	Ejector 10R X M10	18.9" X 11.8" X 9.8"	68.89 lbs.	79	3625



ENZ 1-1/4" Bulldog Recycling Rotating Nozzles

Available in:

ENZ Part#	Size NPT	Description	Nozzle Length and Width	Weight	GPM	PSI
400.101B	1 1/4"	Bulldog Recycling 6R X M10 3 Side X M10 (2 Side X M10 from 80 GPM) 1F X M10	5.0" X 10.0"	16.00 lbs	53	2900



ENZ 1-1/4" Rotopuls Vibration Nozzle

Available in:

ENZ Part#	Size NPT	Description	Nozzle Length and Width	Weight	GPM	PSI
04.100BE	1 1/4"	Rotopuls Vibration 3R X M10-4 Side X M10-(Front Jet Optional)	3.9" X 6.9"	16.0 lbs	53	3625



ENZ 1-1/4" KBRV Rotating Combination Forward Nozzles

Available in:

ENZ Part#	Size NPT	Description	Nozzle Length and Width	Weight	GPM	PSI
04.100BV	1 1/4"	KBRV Rotating Forward Combination 3R X M10 4Side X M10	4.0" X 7.0"	16.22 lbs	53	3625



ENZ 1-1/4" Radial Rotating 75° Nozzles

Available in:

ENZ Part#	Size NPT	Description	Nozzle Length and Width	Weight	GPM	PSI
01.100B	1 1/4"	RGS Radial 3R X M10 4Side X M10	4.0" X 7.1"	16.45 lbs.	53	3625



ENZ 1-1/4" Grenade-Bomb Nozzles

Available in:

ENZ Part#	Size NPT	Description	Nozzle Length and Width	Weight	Jet Degrees	GPM	PSI
40.100C	1 1/4"	Grenade-Bombs 10R X M10	3.9" X 7.5"	17.77 lbs.	10° and 30°R	53	3625
40.100C-SP10	1 1/4"	Grenade-Bombs 10R X M10	3.9" X 7.5"	17.77 lbs.	10°R	53	3625
40.100C-SP20	1 1/4"	Grenade-Bombs 10R X M10	3.9" X 7.5"	17.77 lbs.	20°R	53	3625
42.100C	1 1/4"	Grenade-Bombs 5R X M10 5R X FanjetM10	3.9" X 7.5"	17.77 lbs.	10° and 30°R	53	3625

ENZ 1-1/4" KBR Rotating Combination Nozzles



Available in:

ENZ Part#	Size NPT	Description	Nozzle Length and Width	Weight	GPM	PSI
04.100B	1"	KBR Rotating Combination 3R X M10 4Side X M10	4.0" X 7.0"	16.22 lbs.	53	3625

ENZ 1-1/4" HRV Semi-Radial Forward Rotating Nozzles



Available in:

ENZ Part#	Size NPT	Description	Nozzle Length and Width	Weight	GPM	PSI
03.100B	1 1/4"	HRV Semi-Radial 3R X M10 4Side X M10	4.0" X 7.1"	16.45 lbs.	53	3625



ENZ 1-1/4" HRH Semi-Radial Rotating Nozzles

Available in:

ENZ Part#	Size NPT	Description	Nozzle Length and Width	Weight	GPM	PSI
02.100B	1 1/4"	HRH Semi-Radial 3R X M10 4Side X M10	4.0" X 7.1"	16.45 lbs.	53	3625



ENZ 1-1/4" Turbopuls Vibration Nozzle

Available in:

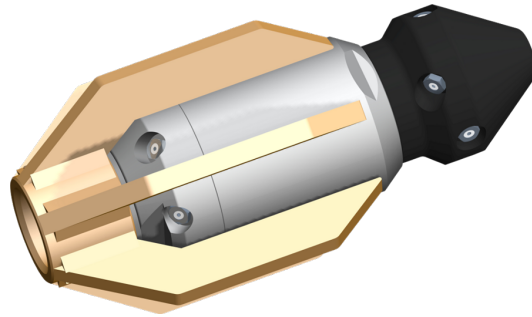
ENZ Part#	Size NPT	Description	Nozzle Length and Width	Weight	GPM	PSI
410.120B	1 1/4"	Turbopuls Vibration 6R X M10- 1 Side X M8 -(Front Jet Optional)	4.7" X 12.6"	32.22lbs	40	2900



ENZ 1-1/4" Chisel Point Nozzle

Available in:

ENZ Part#	Size NPT	Description	Nozzle Length and Width	Weight	Jet Degrees	GPM	PSI
60.125	1 1/4"	Chisel 6R M6 X 4F M6	2.3" X 3.9"	2.05 lbs.	20°R/15°F	53	3625
61.125	1 1/4"	Chisel Point 6R M6 X 3F M6	2.3" X 5.2"	2.1 lbs.	20°R/15°F	53	3625
60.125L	1 1/4"	Chisel 6R M10 X 4F M8	3.9" X 10.2"	18.7 lbs.	10°R/15°F	79	3625
61.125L	1 1/4"	Chisel Point 6R M10 X 3F M8	3.9" X 11.8"	18.72 lbs.	10°R/15°F	79	3625



ENZ 1" Bulldog® Antiblast Nozzle

Available in:

ENZ Part#	Size NPT	Description	Nozzle Length and Width	Weight	GPM	PSI
600.100A	1"	Bulldog® Recycling 6R X M10 3 Side X M10 3 Side X M10	4.5" X 10.0"	17.00 lbs	53	1160

ENZ 1" Bulldog Recycling Rotating Nozzles

Available in:

ENZ Part#	Size NPT	Description	Nozzle Length and Width	Weight	GPM	PSI
404.080HS100	1"	Bulldog Recycling 6 Side X M10 1F X M10 (6R X M8 Optional)	3.9" X 8.7"	8.22 lbs	53	2900
402.080HS150	1"	Bulldog Recycling 6 Side X M10 1F X M10 (6R X M8 Optional)	5.9" X 10.2"	12.82 lbs	53	2900
400.101A	1"	Bulldog Recycling 6R X M10 3 Side X M10 (2 Side X M10 from 80 GPM) 1F X M10	5.0" X 10.0"	16.00 lbs	53	2900



ENZ 1" Bulldozer Nozzle

Available in:

ENZ Part#	Size NPT	Description	Nozzle Length and Width	Weight	GPM	PSI
50.100G	1"	Bulldozer 6R X M10 2R X FanJet M10 1F X M10	19.1" X 7.9" X 5.1"	56.67 lbs.	40	3625

1" Warthog Nozzles



Part Number	Nozzle Size	GPM	Description	PSI	Line Size
SA.WG-1	1" npt	50-80	Warthog Nozzle	up to 5000	8"-36"
SA.WG 040-DS-R5	1"	50-80	Warthog Descaling Head	up to 5000	8"-36"

ENZ 1" KBRV Rotating Combination Forward Nozzle

Available in:



ENZ Part#	Size NPT	Description	Nozzle Length and Width	Weight	GPM	PSI
04.060V	1"	KBRV Rotating Forward Combination 3R X M8 4Side X M8	2.4" X 4.4"	3.56 lbs	26	3625



ENZ 1" Rotopuls Vibration Nozzle

Available in:

ENZ Part#	Size NPT	Description	Nozzle Length and Width	Weight	GPM	PSI
04.060EK	1"	Rotopuls Vibration 3R X M8-4 Side X M6-(Front Jet Optional)	2.4" X 4.4"	3.56 lbs	26	3625

ENZ 1" KBR Rotating Combination Nozzles

Available in:

ENZ Part#	Size NPT	Description	Nozzle Length and Width	Weight	GPM	PSI
04.060	1"	KBR Rotating Combination 3R X M8 4Side X M8	2.4" X 4.4"	3.55 lbs.	21	3625



ENZ 1" HRV Semi-Radial Forward Rotating Nozzles

Available in:

ENZ Part#	Size NPT	Description	Nozzle Length and Width	Weight	GPM	PSI
03.060	1"	HRV Semi-Radial 3R X M8 4Side X M8	2.4" X 4.4"	3.55 lbs.	26	3625





ENZ 1" HRH Semi-Radial Rotating Nozzles

Available in:

ENZ Part#	Size NPT	Description	Nozzle Length and Width	Weight	GPM	PSI
02.060	1"	HRH Semi-Radial 3R X M8	2.4" X 4.4"	3.55 lbs.	16	3625
		4Side X M8				



ENZ 1" Flounder Nozzle

Available in:

ENZ Part#	Size NPT	Description	Nozzle Length and Width	Weight	Jet Degrees	GPM	PSI
70.100	1"	Flounder 8R X M10	13.4" X 6.3" X 2.2"	27.35 lbs.	15°R / 7.5°R / 0°R	53	3625

ENZ 1" Ejector Nozzles

Available in:



ENZ Part#	Size NPT	Description	Nozzle Length and Width	Weight	GPM	PSI
80.100	1"	Ejector 6R X M6	11.8" X 6.3" X 4.7"	16.45 lbs.	53	3625
80.100A	1"	Ejector 6R X M6	15.9" X 10.2" X 8.1"	50.0 lbs.	60	3625

ENZ 1" Radial Rotating 75° Nozzles



Available in:

ENZ Part#	Size NPT	Description	Nozzle Length and Width	Weight	GPM	PSI
01.060	1"	RGS Radial 3R X M8 4Side X M8	2.4" X 4.4"	3.55 lbs.	26	3625

ENZ 1" Grenade-Bomb Nozzles

Available in:



ENZ Part#	Size NPT	Description	Nozzle Length and Width	Weight	Jet Degrees	GPM	PSI
40.100 A	1"	Grenade-Bombs 10R X M10	3.1" X 6.9"	10.9 lbs.	10° and 30°R	40	3625
40.100 A-SP10	1"	Grenade-Bombs 10R X M10	3.1" X 6.9"	10.9 lbs.	10°R	40	3625
40.100 A-SP15	1"	Grenade-Bombs 10R X M10	3.1" X 6.9"	10.9 lbs.	15°R	40	3625
40.100 A-SP30	1"	Grenade-Bombs 10R X M10	3.1" X 6.9"	10.9 lbs.	30°R	40	3625
42.100 A	1"	Grenade-Bombs 5R X M10 5R X Fanjet M10	3.1" X 6.9"	10.9 lbs.	10° and 30°R	40	3625
40.100 B	1"	Grenade-Bombs 10R X M10	4" X 8"	17.78 lbs.	10° and 30°R	40	3625
40.100 B-SP10	1"	Grenade-Bombs 10R X M10	4" X 8"	17.78 lbs.	10°R	40	3625

ENZ 1" Drainage Channel Nozzle



Available in:

ENZ Part#	Size NPT	Description	Nozzle Length and Width	Weight	Jet Degrees	GPM	PSI
40.100 A-SP0	1"	Drainage Channel 10R X M10	3.11" X 5.35"	10.0 lbs.	0°R	40	3626

ENZ 1" Turbopuls Vibration Nozzle



Available in:

ENZ Part#	Size NPT	Description	Nozzle Length and Width	Weight	GPM	PSI
410.120 A	1"	Turbopuls Vibration 6R X M10- 1 Side X M8 - (Front Jet Optional)	4.7" X 12.6"	32.22lbs	40	2900

ENZ 1" Chisel Point Nozzle

Available in:



ENZ Part#	Size NPT	Description	Nozzle Length and Width	Weight	Jet Degrees	GPM	PSI
60.100	1"	Chisel 6R M6 X 4F M6	1.9" X 3.5"	1.20 lbs.	25°R/15° F	40	3625
61.100	1"	Chisel Point 6R M6 X 3F M6	1" X 4"	1.25 lbs.	25°R/15° F	40	3625
60.100L	1"	Chisel 6R M10 X 4F M8	2.7" X 7.4"	6.0 lbs.	25°R/15° F	53	3625

ENZ 1" Standard Cleaning Nozzles

Available in:



ENZ Part#	Size NPT	Description	Nozzle Length and Width	Weight	Jet Degrees	GPM	PSI
30.100	1"	Standard Cleaning 8R X M8 1F X M8	2.4" X 3.27"	1.6 lbs.	30°R/15° F	32	3625
30.100S P20	1"	Standard Cleaning 8R X M8 1F X M8	2.4" X 3.27"	1.6 lbs.	20°R/15° F	32	3625

ENZ 3/4" Bulldozer Nozzle



Available in:

ENZ Part#	Size NPT	Description	Nozzle Length and Width	Weight	GPM	PSI
-----------	----------	-------------	-------------------------	--------	-----	-----

ENZ 3/4" Bulldog Recycling Rotating Nozzles



Available in:

ENZ Part#	Size NPT	Description	Nozzle Length and Width	Weight	GPM	PSI
400.037 C	3/4"	Bulldog Recycling 6 Side X M6 1F X M6	1.5" X 3.5"	0.93 lbs	10.5	2900

ENZ 3/4" KBRV Rotating Combination Forward Nozzles

Available in:



ENZ Part#	Size NPT	Description	Nozzle Length and Width	Weight	GPM	PSI
04.050BV	3/4"	KBRV Rotating Forward Combination 3R X M6 4Side X M6	2.0" X 3.9"	2.45	18	3625

ENZ 3/4" KBR Rotating Combination Nozzles



Available in:

ENZ Part#	Size NPT	Description	Nozzle Length and Width	Weight	GPM	PSI
04.040B	3/4"	KBR Rotating Combination 4Side X M4	1.6" X 3.1"	1.21 lbs.	5	3625

ENZ 3/4" HRV Semi-Radial Forward Rotating Nozzles



Available in:

ENZ Part#	Size NPT	Description	Nozzle Length and Width	Weight	GPM	PSI
03.050	3/4"	HRV Semi-Radial 3R X M6	2.0" X 3.9"	2.45 lbs.	18	3625
		4Side X M6				

ENZ 3/4" HRH Semi-Radial Rotating Nozzles



Available in:

ENZ Part#	Size NPT	Description	Nozzle Length and Width	Weight	GPM	PSI
02.040B	3/4"	HRH Semi-Radial 4Side X M6	1.6" X 3.1"	1.25 lbs.	4.5	3625
02.050B	3/4"	HRH Semi-Radial 4Side X M6	2.0" X 3.9"	2.45 lbs.	11	3625

ENZ 3/4" Radial Rotating 75° Nozzles

Available in:

ENZ Part#	Size NPT	Description	Nozzle Length and Width	Weight	GPM	PSI
01.050B	3/4"	RGS Radial 3R X M6 4Side X M6	2.0" X 3.9"	2.45 lbs.	18	3625

ENZ 3/4" Rotopuls Vibration Nozzle

Available in:

ENZ Part#	Size NPT	Description	Nozzle Length and Width	Weight	GPM	PSI
04.050A E	3/4"	Rotopuls Vibration 3R X M6-4 Side X M6- (Front Jet Optional)	2.0" X 3.9"	2.18 lbs	18	3625





ENZ 3/4" Turbopuls Vibration Nozzle

Available in:

ENZ Part#	Size NPT	Description	Nozzle Length and Width	Weight	GPM	PSI
410.080B	3/4"	Turbopuls Vibration 6R X M10- 1 Side X M8 -(Front Jet Optional)	3.1" X 8.3"	9.56lbs	32	2900



ENZ 3/4" Chisel Point Nozzle

Available in:

ENZ Part#	Size NPT	Description	Nozzle Length and Width	Weight	Jet Degrees	GPM	PSI
60.075	3/4"	Chisel 3R M6 X 4F M4	1.5" X 3.1"	0.71 lbs.	25°R/15°F	26	5075
61.075	3/4"	Chisel Point 3R M6 X 3F M4	1.5" X 3.8"	0.76 lbs.	25°R/15°F	26	5075



ENZ 3/4" Grenade-Bomb Nozzles

Available in:

ENZ Part#	Size NPT	Description	Nozzle Length and Width	Weight	Jet Degrees	GPM	PSI
40.075	3/4"	Grenade-Bombs 4R X M8 /4R X M8 1F X M8	2.3" X 4.6"	3.4 lbs.	10° and 30°R/15°F	26	5075



ENZ 3/4" Drainage Channel Nozzle

Available in:

ENZ Part#	Size NPT	Description	Nozzle Length and Width	Weight	Jet Degrees	GPM	PSI
40.075-SP0	3/4"	Drainage Channel 8R X M8 1F X M8	2.28" X 4.09"	3.2 lbs.	0°R/15°F	26	3626



ENZ 3/4" Flounder Nozzle

Available in:

ENZ Part#	Size NPT	Description	Nozzle Length and Width	Weight	Jet Degrees	GPM	PSI
70.075	3/4"	Flounder 6R X M8	7.7" X 3.9" X 2.0"	7.11 lbs.	10°R and 0°R	26	3625



ENZ 1/2" Flounder Nozzle

Available in:

ENZ Part#	Size NPT	Description	Nozzle Length and Width	Weight	Jet Degrees	GPM	PSI
70.050	1/2"	Flounder 4R X M8	7.7" X 3.5" X 1.4"	5.78 lbs.	15°R and 7.5°R	16	3625

ENZ 1/2" Bulldog Recycling Rotating Nozzles



Available in:

ENZ Part#	Size NPT	Description	Nozzle Length and Width	Weight	GPM	PSI
-----------	----------	-------------	-------------------------	--------	-----	-----



1/2" Warthog Nozzles

Part Number	Nozzle Size	GPM	Description	PSI	Line Size
JN.1/2-WS.P8	1/2" npt	8-20	Warthog w/ Rigid Inlet	up to 5000	4"-8"
JN.1/2-WS	1/2" npt	8-20	Warthog w/ Whip Hose	up to 5000	4"-8"
JN.1/2-WS.J	1/2" npt	8-20	Warthog w/ Ball Joint Inlet	up to 5000	4"-8"

ENZ 1/2" Radial Rotating 75° Nozzles



Available in:

ENZ Part#	Size NPT	Description	Nozzle Length and Width	Weight	GPM	PSI
01.040	1/2"	RGS Radial 3R X M6 4Side X M6	1.6" X 3.1"	1.25 lbs.	11	5075
01.050A	1/2"	RGS Radial 3R X M6 4Side X M6	2.0" X 3.9"	2.45 lbs.	18	5075

ENZ 1/2" KBRV Rotating Combination Forward Nozzles

Available in:



ENZ Part#	Size NPT	Description	Nozzle Length and Width	Weight	GPM	PSI
04.040A V	1/2"	KBRV Rotating Forward Combination 3R X M6 4Side X M6	1.6" X 3.2"	1.20 lbs.	8	5075

ENZ 1/2" Rotopuls Vibration Nozzle

Available in:



ENZ Part#	Size NPT	Description	Nozzle Length and Width	Weight	GPM	PSI
04.040AE	1/2"	Rotopuls Vibration 3R X M6-4 Side X M4- (Front Jet Optional)	1.6" X 3.2"	1.16 lbs	5	5075

ENZ 1/2" Turbopuls Vibration Nozzle

Available in:



ENZ Part#	Size NPT	Description	Nozzle Length and Width	Weight	GPM	PSI
410.080A	1/2"	Turbopuls Vibration 6R X M10- 1 Side X M8 - (Front Jet Optional)	3.1" X 8.3"	9.56lbs	32	2900

ENZ 1/2" KBR Rotating Combination Nozzles

Available in:



ENZ Part#	Size NPT	Description	Nozzle Length and Width	Weight	GPM	PSI
04.040A	1/2"	KBR Rotating Combination 4Side X M4	1.6" X 3.1"	1.21 lbs.	5	5075

ENZ 1/2" HRV Semi-Radial Forward Rotating Nozzles

Available in:



ENZ Part#	Size NPT	Description	Nozzle Length and Width	Weight	GPM	PSI
03.040	1/2"	HRV Semi-Radial 3R X M6 4Side X M6	1.6" X 3.1"	1.25 lbs.	13	5075



ENZ 1/2" HRH Semi-Radial Rotating Nozzles

Available in:

ENZ Part#	Size NPT	Description	Nozzle Length and Width	Weight	GPM	PSI
02.040A	1/2"	HRH Semi-Radial 4Side X M6	1.6" X 3.1"	1.25 lbs.	4.5	5075
02.040AS	1/2"	HRH Semi-Radial 3R X M6 4Side X M6	1.6" X 3.1"	1.25 lbs.	5.5	5075
02.050A	1/2"	HRH Semi-Radial 4Side X M6	2.0" X 3.9"	2.45 lbs.	11	5075

ENZ 1/2" Grenade Bomb Nozzles



Available in:

ENZ Part#	Size NPT	Description	Nozzle Length and Width	Weight	Jet Degrees	GPM	PSI
40.050	1/2"	Standard Cleaning 6R X M8 1F X M8	1.9" X 3.5"	1.9 lbs.	25°R/15°F	13	5075

ENZ 1/2" Drainage Channel Nozzle



Available in:

ENZ Part#	Size NPT	Description	Nozzle Length and Width	Weight	Jet Degrees	GPM	PSI
40.050-SP0	1/2"	Drainage Channel 8R X M8 1F X M8	1.9" X 3.5"	1.9 lbs.	0°R/15°F	15	3626

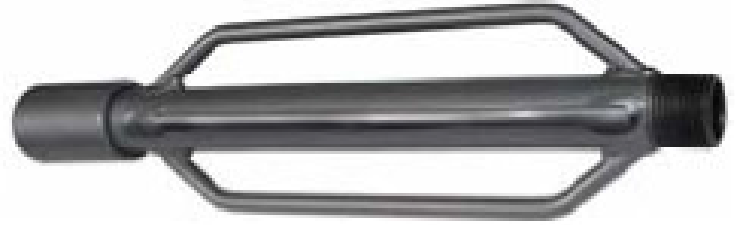


ENZ 1/2" Chisel Point Nozzle

Available in:

ENZ Part#	Size NPT	Description	Nozzle Length and Width	Weight	Jet Degrees	GPM	PSI
60.050	1/2"	Chisel 3R M6 X 4F M4	1.22" X 2.16"	0.15 lbs.	25°R/15°F	14	5075
61.050	1/2"	Chisel Point 3R M6 X 3F M4	1.22" X 3.23"	0.35 lbs.	25°R/15°F	14	5075

4-Wire Nozzle Extensions



Available in:

Southland Tool

Part#	Description:	Type:	Size:
W4-1	1" X 4" 4 Wire Nozzle Extension	Wired	1" X 4"
W6-1	1" X 6" 4 Wire Nozzle Extension	Wired	1" X 6"
W8-1	1" X 8" 4 Wire Nozzle Extension	Wired	1" X 8"
W10-1	1" X 10" 4 Wire Nozzle Extension	Wired	1" X 10"
W12-1	1" X 12" 4 Wire Nozzle Extension	Wired	1" X 12"
W4-34	3/4" X 4" 4 Wire Nozzle Extension	Wired	3/4" X 4"
W6-34	3/4" X 6" 4 Wire Nozzle Extension	Wired	3/4" X 6"
W8-34	3/4" X 8" 4 Wire Nozzle Extension	Wired	3/4" X 8"
W10-34	3/4" X 10" 4 Wire Nozzle Extension	Wired	3/4" X 10"
W12-34	3/4" X 12" 4 Wire Nozzle Extension	Wired	3/4" X 12"
W4-12	1/2" X 4" 4 Wire Nozzle Extension	Wired	1/2" X 4"
W6-12	1/2" X 6" 4 Wire Nozzle Extension	Wired	1/2" X 6"
W8-12	1/2" X 8" 4 Wire Nozzle Extension	Wired	1/2" X 8"
W10-12	1/2" X 10" 4 Wire Nozzle Extension	Wired	1/2" X 10"



Football Style Nozzle Extensions

Available in:

Southland Tool

Part#	Description:	Type:	Size:
NFL-41	1" X 4" Football Nozzle Extension	Football	1" X 4"
NFL-61	1" X 6" Football Nozzle Extension	Football	1" X 6"
NFL-81	1" X 8" Football Nozzle Extension	Football	1" X 8"
NFL-101	1" X 10" Football Nozzle Extension	Football	1" X 10"
NFL-121	1" X 12" Football Nozzle Extension	Football	1" X 12"
NFL-434	3/4" X 4" Football Nozzle Extension	Football	3/4" X 4"
NFL-634	3/4" X 6" Football Nozzle Extension	Football	3/4" X 6"
NFL-834	3/4" X 8" Football Nozzle Extension	Football	3/4" X 8"
NFL-1034	3/4" X 10" Football Nozzle Extension	Football	3/4" X 10"
NFL-1234	3/4" X 12" Football Nozzle Extension	Football	3/4" X 12"
NFL-412	1/2" X 4" Football Nozzle Extension	Football	1/2" X 4"
NFL-612	1/2" X 6" Football Nozzle Extension	Football	1/2" X 6"
NFL-812	1/2" X 8" Football Nozzle Extension	Football	1/2" X 8"
NFL-1012	1/2" X 10" Football Nozzle Extension	Football	1/2" X 10"



6-Wire Nozzle Extensions

Available in:

Southland Tool Part#	Description:	Type:	Size:
WNE-41	1" X 4" 6 Wire Nozzle Extension	Wired	1" X 4"
WNE-61	1" X 6" 6 Wire Nozzle Extension	Wired	1" X 6"
WNE-81	1" X 8" 6 Wire Nozzle Extension	Wired	1" X 8"
WNE-101	1" X 10" 6 Wire Nozzle Extension	Wired	1" X 10"
WNE-121	1" X 12" 6 Wire Nozzle Extension	Wired	1" X 12"
WNE-151	1" X 15" 6 Wire Nozzle Extension	Wired	1" X 15"
WNE-181	1" X 18" 6 Wire Nozzle Extension	Wired	1" X 18"
WNE-201	1" X 20" 6 Wire Nozzle Extension	Wired	1" X 20"
WNE-434	3/4" X 4" 6 Wire Nozzle Extension	Wired	3/4" X 4"
WNE-634	3/4" X 6" 6 Wire Nozzle Extension	Wired	3/4" X 6"
WNE-834	3/4" X 8" 6 Wire Nozzle Extension	Wired	3/4" X 8"
WNE-1034	3/4" X 10" 6 Wire Nozzle Extension	Wired	3/4" X 10"
WNE-1234	3/4" X 12" 6 Wire Nozzle Extension	Wired	3/4" X 12"
WNE-1534	3/4" X 15" 6 Wire Nozzle Extension	Wired	3/4" X 15"
WNE-412	1/2" X 4" 6 Wire Nozzle Extension	Wired	1/2" X 4"
WNE-612	1/2" X 6" 6 Wire Nozzle Extension	Wired	1/2" X 6"

Wired Nozzle Skid Extension

Available in:



Part#	Size
UE69506	1" Proover for 6" Lines
UE69508	1" Proover for 8" Lines
UE69510	1" Proover for 10" Lines
UE69512	1" Proover for 12" Lines
UE69515	1" Proover for 15" Lines

Long 10 Leg Proofer Nozzle Extension

Available in:



Southland Tool

Part#	Description:	Type:	Size:
L-6	6" O.D. X1" Short 10 Leg Proofer Nozzle Extension	Tube	6" O.D.
L-7.5	7.5" O.D. X1" Short 10 Leg Proofer Nozzle Extension	Tube	7.5" O.D.
L-8	8" O.D. X1" Short 10 Leg Proofer Nozzle Extension	Tube	8" O.D.
L-9.5	9" O.D. X1" Short 10 Leg Proofer Nozzle Extension	Tube	9" O.D.
L-10	10" O.D. X1" Short 10 Leg Proofer Nozzle Extension	Tube	10" O.D.



Short 10 Leg Proofer Nozzle Extension

Available in:

Southland Tool

Part#	Description:	Type:	Size:
S-6	6" O.D. X1" Short 10 Leg Proofer Nozzle Extension	Tube	6" O.D.
S-7.5	7.5" O.D. X1" Short 10 Leg Proofer Nozzle Extension	Tube	7.5" O.D.
S-8	8" O.D. X1" Short 10 Leg Proofer Nozzle Extension	Tube	8" O.D.
S-9.5	9" O.D. X1" Short 10 Leg Proofer Nozzle Extension	Tube	9" O.D.
S-10	10" O.D. X1" Short 10 Leg Proofer Nozzle Extension	Tube	10" O.D.
S-11.5	11.5" O.D. X1" Short 10 Leg Proofer Nozzle Extension	Tube	11.5" O.D.

Finned Nozzle Extension

Available in:



Southland Tool Part#	Description:	Type:	Size:
FE-41	1" X 4" 4-Finned Nozzle Extension	Finned	1" X 4"
FE-61	1" X 6" 4-Finned Nozzle Extension	Finned	1" X 6"
FE-81	1" X 8" 4-Finned Nozzle Extension	Finned	1" X 8"
FE-101	1" X 10" 4-Finned Nozzle Extension	Finned	1" X 10"
FE-121	1" X 12" 4-Finned Nozzle Extension	Finned	1" X 12"
FE-151	1" X 15" 4-Finned Nozzle Extension	Finned	1" X 15"
FE-434	3/4" X 4" 4-Finned Nozzle Extension	Finned	3/4" X 4"
FE-634	3/4" X 6" 4-Finned Nozzle Extension	Finned	3/4" X 6"
FE-834	3/4" X 8" 4-Finned Nozzle Extension	Finned	3/4" X 8"

3/4"-1 1/4" Bullet Nozzle Skid Extension

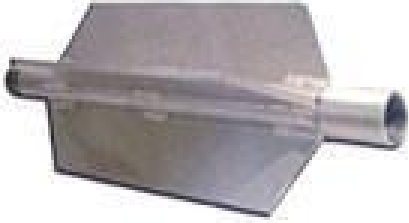
Available in:



Part#	Size
E01	3/4" X 15" Long
A02	1" X 15" Long
A022	1 1/4" X 15" Long

Finned Nozzle Skid Extension

Available in:



Part#	Size
D0-5	3/4" X 17" Long X 4 1/4" Fin
D0-5A	3/4" X 14 3/4" Long X 3" Fin
D0-5B	1/2" X 3" X 14 3/4"
D0-6	1" X 17" Long 4 3/4" Fin
D0-6A	1" X 14 3/4" Long 3" Fin
D0-8	1 1/4" X 17" Long 4 3/4" Fin
D0-8A	1 1/4" X 14 3/4" Long 3" Fin

Finned Nozzle Extension with Wheels

Available in:

Southland Tool



Part#	Description:	Type:	Size:
WE-61	1" Wheeled Nozzle Extension for 6" and up	Wheeled	1" X 6"
WE-81	1" Wheeled Nozzle Extension for 8" and up	Wheeled	1" X 8"
WE-101	1" Wheeled Nozzle Extension for 10" and up	Wheeled	1" X 10"
WE-121	1" Wheeled Nozzle Extension for 12" and up	Wheeled	1" X 12"
WE-151	1" Wheeled Nozzle Extension for 15" and up	Wheeled	1" X 15"
WE-634	3/4" Wheeled Nozzle Extension for 6" and up	Wheeled	3/4" X 6"



Sewer Cleaning Hose 1 1/4"

Available in:

Part#	Description:	Size
UEMP925-400	Piranha 2500 PSI Orange Hose	1 1/4" x 400'
UEMP925-500	Piranha 2500 PSI Orange Hose	1 1/4" x 500'
UEMP925-600	Piranha 2500 PSI Orange Hose	1 1/4" x 600'
UEMP925-700	Piranha 2500 PSI Orange Hose	1 1/4" x 700'
UEMP925-800	Piranha 2500 PSI Orange Hose	1 1/4" x 800'
UEMI925-400	Parker 2500 PSI Orange Hose	1 1/4" x 400'
UEMI925-500	Parker 2500 PSI Orange Hose	1 1/4" x 500'
UEMI925-600	Parker 2500 PSI Orange Hose	1 1/4" x 600'
UEMI925-700	Parker 2500 PSI Orange Hose	1 1/4" x 700'
UEMI925-800	Parker 2500 PSI Orange Hose	1 1/4" x 800'
U44109	Eaton 2500 PSI Orange Hose	1 1/4" x 500'
U44109B	Eaton 2500 PSI Orange Hose	1 1/4" x 600'
U44109A	Eaton 2500 PSI Orange Hose	1 1/4" x 700'

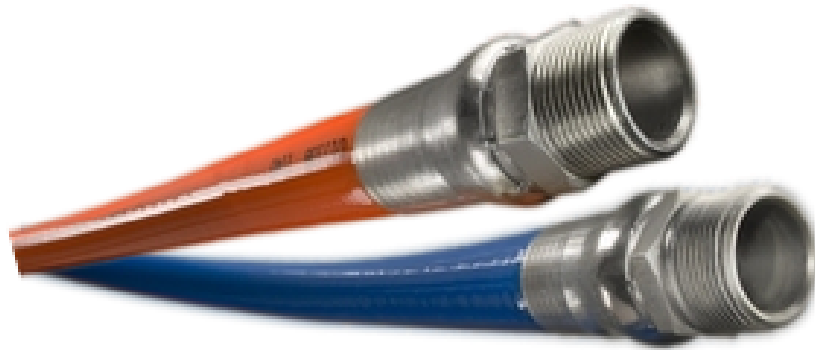


Sewer Cleaning Hose 1"

Available in:

Part#	Description:	Size
UEMP625-400	Piranha 2500 PSI Orange Hose	1" x 400'
UEMP625-500	Piranha 2500 PSI Orange Hose	1" x 500'
UEMP625-600	Piranha 2500 PSI Orange Hose	1" x 600'
UEMP625-800	Piranha 2500 PSI Orange Hose	1" x 800'
UEMP625-1000	Piranha 2500 PSI Orange Hose	1" x 1000'
UEMP630-400	Piranha 3000 PSI Blue Hose	1" x 400'
UEMP630-500	Piranha 3000 PSI Blue Hose	1" x 500'
UEMP630-600	Piranha 3000 PSI Blue Hose	1" x 600'
UEMP630-800	Piranha 3000 PSI Blue Hose	1" x 800'
4625-16-400	Cobra 2500 PSI Orange Hose	1" x 400'
4625-16-500	Cobra 2500 PSI Orange Hose	1" x 500'
4625-16-600	Cobra 2500 PSI Orange Hose	1" x 600'
4625-16-800	Cobra 2500 PSI Orange Hose	1" x 800'
4630-16-400	Cobra 3000 PSI Blue Hose	1" x 400'
4630-16-500	Cobra 3000 PSI Blue Hose	1" x 500'
4630-16-600	Cobra 3000 PSI Blue Hose	1" x 600'
4630-16-800	Cobra 3000 PSI Blue Hose	1" x 800'
UEMI625-400	Parker 2500 PSI Orange Hose	1" x 400'
UEMI625-500	Parker 2500 PSI Orange Hose	1" x 500'
UEMI625-600	Parker 2500 PSI Orange Hose	1" x 600'
UEMI625-700	Parker 2500 PSI Orange Hose	1" x 700'

UEMI625-800	Parker 2500 PSI Orange Hose	1" x 800'
UEMI630-400	Parker 3000 PSI Blue Hose	1" x 400'
UEMI630-500	Parker 3000 PSI Blue Hose	1" x 500'
UEMI630-600	Parker 3000 PSI Blue Hose	1" x 600'
UEMI630-700	Parker 3000 PSI Blue Hose	1" x 700'
U43569	Eaton 2500 PSI Orange Hose	1" x 400'
U43570	Eaton 2500 PSI Orange Hose	1" x 500'
U43571	Eaton 2500 PSI Orange Hose	1" x 600'
U43569F	Eaton 2500 PSI Orange Hose	1" x 700'
U43569E	Eaton 2500 PSI Orange Hose	1" x 800'
U46113	Eaton 3000 PSI Blue Hose	1" x 500'
U46113C	Eaton 3000 PSI Blue Hose	1" x 600'
U46113D	Eaton 3000 PSI Blue Hose	1" x 800'



Sewer Cleaning Hose 3/4"

Available in:

Part#	Description:	Size
UEMP225-400	Piranha 2500 PSI Orange Hose	3/4" x 400'
UEMP225-500	Piranha 2500 PSI Orange Hose	3/4" x 500'
UEMP225-600	Piranha 2500 PSI Orange Hose	3/4" x 600'
UEMP225-700	Piranha 2500 PSI Orange Hose	3/4" x 800'
UEMP230-400	Piranha 3000 PSI Orange Hose	3/4" x 400'
4625-12-400	Cobra 2500 PSI Orange Hose	3/4" x 400'
4625-12-500	Cobra 2500 PSI Orange Hose	3/4" x 500'
4625-12-600	Cobra 2500 PSI Orange Hose	3/4" x 600'
4625-12-800	Cobra 2500 PSI Orange Hose	3/4" x 800'
4630-12-400	Cobra 3000 PSI Blue Hose	3/4" x 400'
4630-12-500	Cobra 3000 PSI Blue Hose	3/4" x 500'
4630-12-600	Cobra 3000 PSI Blue Hose	3/4" x 600'
4630-12-800	Cobra 3000 PSI Blue Hose	3/4" x 800'
UEMI225-400	Parker 2500 PSI Orange Hose	3/4" x 400'
UEMI225-500	Parker 2500 PSI Orange Hose	3/4" x 500'
UEMI225-600	Parker 2500 PSI Orange Hose	3/4" x 600'

UEMI225-800	Parker 2500 PSI Orange Hose	3/4" x 800'
UEMI230-400	Parker 3000 PSI Blue Hose	3/4" x 400'
UEMI230-500	Parker 3000 PSI Blue Hose	3/4" x 500'
UEMI230-600	Parker 3000 PSI Blue Hose	3/4" x 600'
UEMI230-700	Parker 3000 PSI Blue Hose	3/4" x 700'
UEMI230-800	Parker 3000 PSI Blue Hose	3/4" x 800'
UEMA225-400	Eaton 2500 PSI Orange Hose	3/4" x 400'
UEMA225-500	Eaton 2500 PSI Orange Hose	3/4" x 500'
UEMA225-600	Eaton 2500 PSI Orange Hose	3/4" x 600'
UEMA225-700	Eaton 2500 PSI Orange Hose	3/4" x 700'
UEMA225-800	Eaton 2500 PSI Orange Hose	3/4" x 800'
UEMA225-1000	Eaton 2500 PSI Orange Hose	3/4" x 1000'
U46916A	Eaton 3000 PSI Blue Hose	3/4" x 400'
U46916	Eaton 3000 PSI Blue Hose	3/4" x 500'
U46916E	Eaton 3000 PSI Blue Hose	3/4" x 600'
U46916C	Eaton 3000 PSI Blue Hose	3/4" x 800'
U46916D	Eaton 3000 PSI Blue Hose	3/4" x 1000'



Sewer Cleaning Hose 5/8"

Available in:

Part#	Description:	Size
UEM550-400	Piranha 2500 PSI Orange Hose	5/8" x 400'
UEM550-500	Piranha 2500 PSI Orange Hose	5/8" x 500'
UEM550-600	Piranha 2500 PSI Orange Hose	5/8" x 600'
UEM550-800	Piranha 2500 PSI Orange Hose	5/8" x 800'
UEM550-1000	Piranha 2500 PSI Orange Hose	5/8" x 1000'
UEMI510-500	Parker 2500 PSI Orange Hose	5/8" x 500'



Sewer Cleaning Hose 1/2"

Available in:

Part#	Description:	Size
UEM5500-400	Piranha 4000 PSI Black Hose	1/2" x 400'
UEM5500-500	Piranha 4000 PSI Black Hose	1/2" x 500'
UEM5500-600	Piranha 4000 PSI Black Hose	1/2" x 600'
4640-08-400	Cobra 4000 PSI Green Hose	1/2" x 400'
4640-08-500	Cobra 4000 PSI Green Hose	1/2" x 500'
4640-08-600	Cobra 4000 PSI Green Hose	1/2" x 600'
4640-08-800	Cobra 4000 PSI Green Hose	1/2" x 800'
UEMI500-400	Parker 4000 PSI Green Hose	1/2" x 400'
UEMI500-500	Parker 4000 PSI Green Hose	1/2" x 500'
UEMI500-600	Parker 4000 PSI Green Hose	1/2" x 600'

Standard Concave Root Saw Blades

Available in:



Southland Tool Part#	Description:	Type:	Size:
CRS-3B	3" Standard Concave Root Saw Blade Only	Concave	3"
CRS-4B	4" Standard Concave Root Saw Blade Only	Concave	4"
CRS-5B	5" Standard Concave Root Saw Blade Only	Concave	5"
CRS-6B	6" Standard Concave Root Saw Blade Only	Concave	6"
CRS-8B	8" Standard Concave Root Saw Blade Only	Concave	8"
CRS-10B	10" Standard Concave Root Saw Blade Only	Concave	10"

Concave Root Saw Blade Only Standard

Available in:



Southland Tool Part#	Description:	Type:	Size:
CRS-3B	3" Concave Root Saw Blade Only	Concave	3" Diameter
CRS-4B	4" Concave Root Saw Blade Only	Concave	4" Diameter
CRS-5B	5" Concave Root Saw Blade Only	Concave	5" Diameter
CRS-6B	6" Concave Root Saw Blade Only	Concave	6" Diameter
CRS-7B	7" Concave Root Saw Blade Only	Concave	7" Diameter
CRS-8B	8" Concave Root Saw Blade Only	Concave	8" Diameter
CRS-10B	10" Concave Root Saw Blade Only	Concave	10" Diameter
CRS-12B	12" Concave Root Saw Blade Only	Concave	12" Diameter
CRS-15B	15" Concave Root Saw Blade Only	Concave	15" Diameter

Concave Root Saw Blade Only Heavy Duty

Available in:

Southland Tool

Part#	Description:	Type:	Size:
HCRS-3B	3" Concave Root Saw Blade Only Heavy Duty	Concave	3" Diameter
HCRS-4B	4" Concave Root Saw Blade Only Heavy Duty	Concave	4" Diameter
HCRS-5B	5" Concave Root Saw Blade Only Heavy Duty	Concave	5" Diameter
HCRS-6B	6" Concave Root Saw Blade Only Heavy Duty	Concave	6" Diameter
HCRS-7B	7" Concave Root Saw Blade Only Heavy Duty	Concave	7" Diameter
HCRS-8B	8" Concave Root Saw Blade Only Heavy Duty	Concave	8" Diameter



Concave Saw Blade without hub

Available in:



Part#	Size
7600C-4	4" Concave Blade
7600C-6	6" Concave Blade
7600C-8	8" Concave Blade
7600C-10	10" Concave Blade
7600C-12	12" Concave Blade
7600C-15	15" Concave Blade
7600C-18	18" Concave Blade

Heavy Duty Concave Root Saw Blades

Available in:



Southland Tool Part#	Description:	Type:	Size:
HCRS-3B	3" Heavy Duty Concave Root Saw Blade Only	Concave	3"
HCRS-4B	4" Heavy Duty Concave Root Saw Blade Only	Concave	4"
HCRS-5B	5" Heavy Duty Concave Root Saw Blade Only	Concave	5"
HCRS-6B	6" Heavy Duty Concave Root Saw Blade Only	Concave	6"
HCRS-8B	8" Heavy Duty Concave Root Saw Blade Only	Concave	8"

Heavy Duty Puma Tooth Concave Root Saw Blades



Available in:

Southland Tool Part#	Description:	Type:	Size:
MCRS-6B	6" Heavy Duty Concave Root Saw Blade Only	Concave	6"
MCRS-7B	7" Heavy Duty Concave Root Saw Blade Only	Concave	7"

Concave Supreme Saw Blade with Hub

Available in:



Part#	Size
7600C-4H	4" Concave Blade
7600C-6H	6" Concave Blade
7600C-8H	8" Concave Blade
7600C-10H	10" Concave Blade
7600C-12H	12" Concave Blade
7600C-15H	15" Concave Blade
7600C-18H	18" Concave Blade



Concave Root Saw Standard

Available in:

Southland Tool

Part#	Description:	Type:	Size:
CRS-3-1	3" Concave Root Saw Standard for 5/16" Rod	Concave	3" Diameter
CRS-3-2	3" Concave Root Saw Standard for 3/8" Rod	Concave	3" Diameter
CRS-4-1	4" Concave Root Saw Standard for 5/16" Rod	Concave	4" Diameter
CRS-4-2	4" Concave Root Saw Standard for 3/8" Rod	Concave	4" Diameter
CRS-6-1	6" Concave Root Saw Standard for 5/16" Rod	Concave	6" Diameter
CRS-6-2	6" Concave Root Saw Standard for 3/8" Rod	Concave	6" Diameter
CRS-8-1	8" Concave Root Saw Standard for 5/16" Rod	Concave	8" Diameter
CRS-8-2	8" Concave Root Saw Standard for 3/8" Rod	Concave	8" Diameter
CRS-10-1	10" Concave Root Saw Standard for 5/16" Rod	Concave	10" Diameter
CRS-10-2	10" Concave Root Saw Standard for 3/8" Rod	Concave	10" Diameter
CRS-12-1	12" Concave Root Saw Standard for 5/16" Rod	Concave	12" Diameter



Concave Root Saw Heavy Duty

Available in:

Southland Tool

Part#	Description:	Type:	Size:
HCRS-3-1	3" Heavy Duty Concave Root Saw Standard for 5/16" Rod	Concave	3" Diameter
HCRS-3-2	3" Heavy Duty Concave Root Saw Standard for 3/8" Rod	Concave	3" Diameter
HCRS-4-1	4" Heavy Duty Concave Root Saw Standard for 5/16" Rod	Concave	4" Diameter
HCRS-4-2	4" Heavy Duty Concave Root Saw Standard for 3/8" Rod	Concave	4" Diameter
HCRS-6-1	6" Heavy Duty Concave Root Saw Standard for 5/16" Rod	Concave	6" Diameter
HCRS-6-2	6" Heavy Duty Concave Root Saw Standard for 3/8" Rod	Concave	6" Diameter
HCRS-8-1	8" Heavy Duty Concave Root Saw Standard for 5/16" Rod	Concave	8" Diameter
HCRS-8-2	8" Heavy Duty Concave Root Saw Standard for 3/8" Rod	Concave	8" Diameter

HCRS-10-1	10" Heavy Duty Concave Root Saw Standard for 5/16" Rod	Concave	10" Diameter
HCRS-10-2	10" Heavy Duty Concave Root Saw Standard for 3/8" Rod	Concave	10" Diameter
HCRS-12-1	12" Heavy Duty Concave Root Saw Standard for 5/16" Rod	Concave	12" Diameter
HCRS-12-2	12" Heavy Duty Concave Root Saw Standard for 3/8" Rod	Concave	12" Diameter
HCRS-15-1	15" Heavy Duty Concave Root Saw Standard for 5/16" Rod	Concave	15" Diameter
HCRS-15-2	15" Heavy Duty Concave Root Saw Standard for 3/8" Rod	Concave	15" Diameter
HCRS-18-1	18" Heavy Duty Concave Root Saw Standard for 5/16" Rod	Concave	18" Diameter
HCRS-18-2	18" Heavy Duty Concave Root Saw Standard for 3/8" Rod	Concave	18" Diameter
HCRS-20-1	20" Heavy Duty Concave Root Saw Standard for 5/16" Rod	Concave	20" Diameter
HCRS-20-2	20" Heavy Duty Concave Root Saw Standard for 3/8" Rod	Concave	20" Diameter

Super Duty Large Diameter Concave Root Saws with Spokes

Available in:



Southland Tool Part#	Description:	Type:	Size:
SCRS-12	12" Concave Heavy Duty Saw with 3 Spokes and 1" Hub	Concave	12"
SCRS-15	15" Concave Heavy Duty Saw with 3 Spokes and 1" Hub	Concave	15"
SCRS-18	18" Concave Heavy Duty Saw with 3 Spokes and 1" Hub	Concave	18"

Carbide Tipped Concave Root Saws

Available in:



Southland Tool Part#	Description:	Type:	Size:
SCS-6	6" Carbide Tipped Concave Root Saw Blade Only	Concave	6"
SCS-8	8" Carbide Tipped Concave Root Saw Blade Only	Concave	8"
SCS-10	10" Carbide Tipped Concave Root Saw Blade Only	Concave	10"

Standard Flat Root Saw Blades

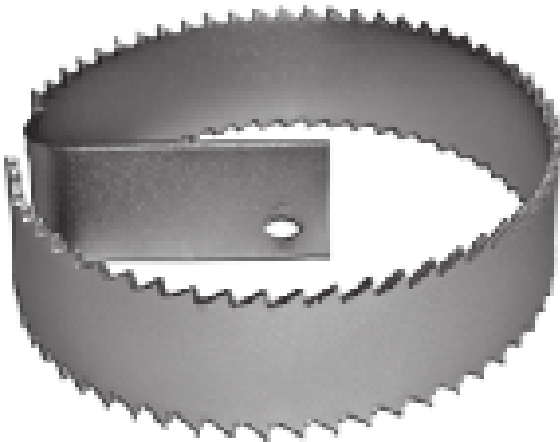
Available in:



Southland Tool Part#	Description:	Type:	Size:
FRS-3B	3" Standard Flat Root Saw Blade Only	Flat	3"
FRS-4B	4" Standard Flat Root Saw Blade Only	Flat	4"
FRS-5B	5" Standard Flat Root Saw Blade Only	Flat	5"
FRS-6B	6" Standard Flat Root Saw Blade Only	Flat	6"

Heavy Duty Flat Root Saw Blades

Available in:



Southland Tool Part#	Description:	Type:	Size:
HFRS-3B	3" Heavy Duty Flat Root Saw Blade Only	Flat	3"
HFRS-4B	4" Heavy Duty Flat Root Saw Blade Only	Flat	4"
HFRS-5B	5" Heavy Duty Flat Root Saw Blade Only	Flat	5"
HFRS-6B	6" Heavy Duty Flat Root Saw Blade Only	Flat	6"

Flat Root Saw Blade Only Standard

Available in:

Southland Tool

Part#	Description:	Type:	Size:
FRS-3B	3" Flat Root Saw Blade Only Standard	Flat	3" Diameter
FRS-4B	4" Flat Root Saw Blade Only Standard	Flat	4" Diameter
FRS-5B	5" Flat Root Saw Blade Only Standard	Flat	5" Diameter
FRS-6B	6" Flat Root Saw Blade Only Standard	Flat	6" Diameter
FRS-7B	7" Flat Root Saw Blade Only Standard	Flat	7" Diameter
FRS-8B	8" Flat Root Saw Blade Only Standard	Flat	8" Diameter
FRS-10B	10" Flat Root Saw Blade Only Standard	Flat	10" Diameter
FRS-12B	12" Flat Root Saw Blade Only Standard	Flat	12" Diameter
FRS-15B	15" Flat Root Saw Blade Only Standard	Flat	15" Diameter



Flat Saw Blade without hub

Available in:



Part#	Size
7600F-4	4" Flat Blade
7600F-6	6" Flat Blade
7600F-8	8" Flat Blade
7600F-10	10" Flat Blade
7600F-12	12" Flat Blade
7600F-15	15" Flat Blade
7600F-18	18" Flat Blade

4"-18" Flat Supreme Saw Blade with Hub

Available in:



Part#	Size
7600F-4H	4" Flat Blade
7600F-6H	6" Flat Blade
7600F-8H	8" Flat Blade
7600F-10H	10" Flat Blade
7600F-12H	12" Flat Blade
7600F-15H	15" Flat Blade
7600F-18H	18" Flat Blade

Flat Root Saw Blade Only Heavy Duty

Available in:

Southland Tool

Part#	Description:	Type:	Size:
HFRS-3B	3" Flat Root Saw Blade Only Heavy Duty	Flat	3" Diameter
HFRS-4B	4" Flat Root Saw Blade Only Heavy Duty	Flat	4" Diameter
HFRS-5B	5" Flat Root Saw Blade Only Heavy Duty	Flat	5" Diameter
HFRS-6B	6" Flat Root Saw Blade Only Heavy Duty	Flat	6" Diameter
HFRS-7B	7" Flat Root Saw Blade Only Heavy Duty	Flat	7" Diameter
HFRS-8B	8" Flat Root Saw Blade Only Heavy Duty	Flat	8" Diameter
HFRS-10B	10" Flat Root Saw Blade Only Heavy Duty	Flat	10" Diameter





Flat Root Saws Standard

Available in:

Southland Tool

Part#	Description:	Type:	Size:
FRS-3-1	3" Flat Root Saw Standard for 5/16" Rod	Flat	3" Diameter
FRS-3-2	3" Flat Root Saw Standard for 3/8" Rod	Flat	3" Diameter
FRS-4-1	4" Flat Root Saw Standard for 5/16" Rod	Flat	4" Diameter
FRS-4-2	4" Flat Root Saw Standard for 3/8" Rod	Flat	4" Diameter
FRS-6-1	6" Flat Root Saw Standard for 5/16" Rod	Flat	6" Diameter
FRS-6-2	6" Flat Root Saw Standard for 3/8" Rod	Flat	6" Diameter
FRS-8-1	8" Flat Root Saw Standard for 5/16" Rod	Flat	8" Diameter
FRS-8-2	8" Flat Root Saw Standard for 3/8" Rod	Flat	8" Diameter
FRS-10-1	10" Flat Root Saw Standard for 5/16" Rod	Flat	10" Diameter
FRS-10-2	10" Flat Root Saw Standard for 3/8" Rod	Flat	10" Diameter
FRS-12-1	12" Flat Root Saw Standard for 5/16" Rod	Flat	12" Diameter
FRS-12-2	12" Flat Root Saw Standard for 3/8" Rod	Flat	12" Diameter

FRS-15-1	15" Flat Root Saw Standard for 5/16" Rod	Flat	15" Diameter
FRS-15-2	15" Flat Root Saw Standard for 3/8" Rod	Flat	15" Diameter
FRS-18-1	18" Flat Root Saw Standard for 5/16" Rod	Flat	18" Diameter
FRS-18-2	18" Flat Root Saw Standard for 3/8" Rod	Flat	18" Diameter
FRS-20-1	20" Flat Root Saw Standard for 5/16" Rod	Flat	20" Diameter
FRS-20-2	20" Flat Root Saw Standard for 3/8" Rod	Flat	20" Diameter

Flat Root Saws Heavy Duty

Available in:

Southland Tool

Part#	Description:	Type:	Size:
HFRS-3-1	3" Flat Root Saw Heavy Duty for 5/16" Rod	Flat	3" Diameter
HFRS-3-2	3" Flat Root Saw Heavy Duty for 3/8" Rod	Flat	3" Diameter
HFRS-4-1	4" Flat Root Saw Heavy Duty for 5/16" Rod	Flat	4" Diameter
HFRS-4-2	4" Flat Root Saw Heavy Duty for 3/8" Rod	Flat	4" Diameter
HFRS-6-1	6" Flat Root Saw Heavy Duty for 5/16" Rod	Flat	6" Diameter
HFRS-6-2	6" Flat Root Saw Heavy Duty for 3/8" Rod	Flat	6" Diameter
HFRS-8-1	8" Flat Root Saw Heavy Duty for 5/16" Rod	Flat	8" Diameter
HFRS-8-2	8" Flat Root Saw Heavy Duty for 3/8" Rod	Flat	8" Diameter
HFRS-10-1	10" Flat Root Saw Heavy Duty for 5/16" Rod	Flat	10" Diameter
HFRS-10-2	10" Flat Root Saw Heavy Duty for 3/8" Rod	Flat	10" Diameter
HFRS-12-1	12" Flat Root Saw Heavy Duty for 5/16" Rod	Flat	12" Diameter
HFRS-12-2	12" Flat Root Saw Heavy Duty for 3/8" Rod	Flat	12" Diameter



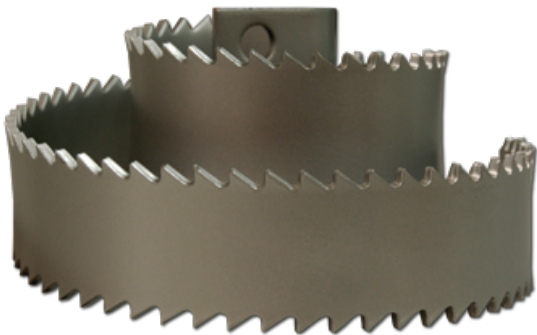
Spiral Supreme Saw Blade with Hub



Available in:

Part#	Size
7600-4H	4" Spiral Blade
7600-6H	6" Spiral Blade
7600-8H	8" Spiral Blade
7600-10H	10" Spiral Blade
7600-12H	12" Spiral Blade
7600-15H	15" Spiral Blade
7600-18H	18" Spiral Blade

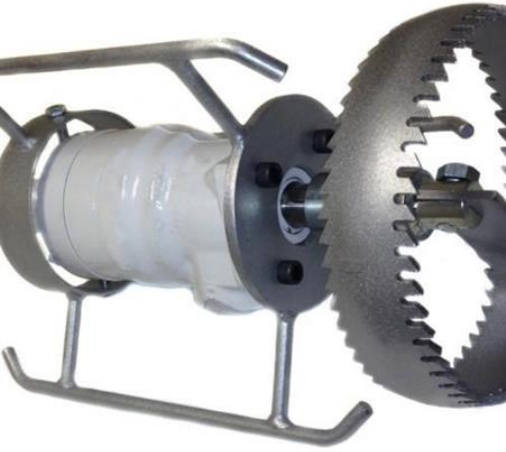
Spiral Saw Blade without hub



Available in:

Part#	Size
7600-4	4" Spiral Blade
7600-6	6" Spiral Blade
7600-8	8" Spiral Blade
7600-10	10" Spiral Blade
7600-12	12" Spiral Blade
7600-15	15" Spiral Blade
7600-18	18" Spiral Blade

Skids for Hi-Torque Style Root Cutters



Available in:

Southland Tool

Part#	Description:	Type:
STSS-6	6" Easy Root Cutter Skid with 6 Rails	6"
STSS-8	8" Easy Root Cutter Skid with 3 Rails	8"
STSS-10	10" Easy Root Cutter Skid with 3 Rails	10"
STSS-12	12" Easy Root Cutter Skid with 3 Rails	12"

Lateral Root Cutters

Available in:

Southland Tool



Part#	Description:	Type:
S9031/2	1/2" Small Diameter Root Cutter with 5/8" Shaft	1/2" Diameter
LKS-3	Lateral Root Cutter Skid for 3" Pipe	3" Pipe
LKS-4	Lateral Root Cutter Skid for 4" Pipe	4" Pipe
LKS-6	Lateral Root Cutter Skid for 6" Pipe	6" Pipe
LKS-8	Lateral Root Cutter Skid for 8" Pipe	8" Pipe



Root Cutter Skids

Available in:

Part#	Description:
950-111S	Mainline Root Cutter Motor and Tail Nozzle.
950-0000C	Complete Mainline Kit with Concave Blades and Regular Skids.
950-0000CW	Complete Mainline Kit with Concave Blades and Wheeled Skids.
950-0000F	Complete Mainline Kit with Flat Blades and Regular Skids.
950-0000FB	Complete Mainline Kit with Flex Blades and Regular Skids.
950-0000W	Complete Mainline Kit with Spiral Blades and Wheeled Skids.
950-0000S	Complete Mainline Kit with Spiral Blades and Regular Skids.
950-0000CAK	Complete Mainline Kit with CAK tool assembly and Regular Skids.
950-0000NB	Complete Mainline Kit with No Blades and Regular Skids.



Mainline Root Cutter Kits

Available in:

Part#	Description:
950-111S	Mainline Root Cutter Motor and Tail Nozzle.
950-0000C	Complete Mainline Kit with Concave Blades and Regular Skids.
950-0000CW	Complete Mainline Kit with Concave Blades and Wheeled Skids.
950-0000F	Complete Mainline Kit with Flat Blades and Regular Skids.
950-0000FB	Complete Mainline Kit with Flex Blades and Regular Skids.
950-0000W	Complete Mainline Kit with Spiral Blades and Wheeled Skids.
950-0000S	Complete Mainline Kit with Spiral Blades and Regular Skids.
950-0000CAK	Complete Mainline Kit with CAK tool assembly and Regular Skids.
950-0000NB	Complete Mainline Kit with No Blades and Regular Skids.
950-1000C	Complete Mainline Kit with Concave Blades and Donut Skids.



Hydraulic Root Cutter Saw Kits

Available in:

Southland Tool

Part#	Description:	Size
SHYK-1	Hydraulic Root Cutter Kit Includes: 4 Easy Skids, 4 Saws (6",8",10" and 12"), 1" Hub, Arbor Tool and Tool Box	1" Hub
SHYK-34	Hydraulic Root Cutter Kit Includes: 4 Easy Skids, 4 Saws (6",8",10" and 12"), 3/4" Hub, Arbor Tool and Tool Box	3/4" Hub
SHYK-13	Hydraulic Root Cutter Kit Includes: 3 Easy Skids, 3 Saws (6",8" and 10"), 1" Hub, Arbor Tool and Tool Box	1" Hub
SHYK-33	Hydraulic Root Cutter Kit Includes: 3 Easy Skids, 3 Saws (6",8" and 10"), 3/4" Hub, Arbor Tool and Tool Box	3/4" Hub
SHYM-1	Hydraulic Root Cutter Motor Only Puma Style 1"	1" Shaft
SHYM3/4	Hydraulic Root Cutter Motor Only Puma Style 3/4"	3/4" Shaft



Hi-Torque Hydraulic Root Saw Cutter Kit and Motors

Available in:

Southland Tool

Part#	Description:	Type:
S906K-1	Hi-Torque Hydraulic Root Cutter Kit. Includes: 4 Easy Skids and 4 Saws (6",8",10" and 12"), 1" Hub, Arbor Tool and Tool Box.	1"
S906K-3/4	Hi-Torque Hydraulic Root Cutter Kit. Includes: 4 Easy Skids and 4 Saws (6",8",10" and 12"), 3/4" Hub, Arbor Tool and Tool Box.	3/4"
S906M-1	Hi-Torque Hydraulic Root Cutter Only 1".	1"
S906M34	Hi-Torque Hydraulic Root Cutter Only 3/4".	3/4"

DTC-8-K

Diamond Tap Cutter Kit. Includes:
S906M-1 Motor, 8" Cutter DTC-8, Tool 8"
Box, Arbor Tool and Allen Wrench.

Lateral Root Cutter Kits



Available in:

Part#	Description:
950-219	Lateral Root Cutter Motor and Tail Nozzle.
950-2000F	Complete Mainline Kit with Concave Blades and Regular Skids.
950-2000C	Complete Mainline Kit with Concave Blades and Wheeled Skids.
950-2000S	Complete Mainline Kit with Flat Blades and Regular Skids.
950-2000NB	Complete Mainline Kit with Flex Blades and Regular Skids.

Skids for Puma Root Cutters



Available in:

Southland Tool

Part#	Description:	Type:
SS-6	6" Easy Root Cutter Skid with 6 Rails	6"
SS-8	8" Easy Root Cutter Skid with 3 Rails	8"
SS-10	10" Easy Root Cutter Skid with 3 Rails	10"
SS-12	12" Easy Root Cutter Skid with 3 Rails	12"
SS-15	15" Easy Root Cutter Skid with 3 Rails	15"



Skids for Round Body Puma Root Cutters

Available in:

Southland Tool

Part#	Description:	Type:
RBS-4	4" Skid Donuts for Round Body Root Cutter	4"
RBS-6	6" Skid Donuts for Round Body Root Cutter	6"
RBS-8	8" Skid Donuts for Round Body Root Cutter	8"
RBS-10	10" Skid Donuts for Round Body Root Cutter	10"
RBS-12	12" Skid Donuts for Round Body Root Cutter	12"
RBS-15	15" Skid Donuts for Round Body Root Cutter	15"

Saw Chuck



Available in:

Part#	Size
960-100	1" Saw Chuck
960-200	5/8" Flex Saw Blade Chuck

Saw Blade Hub



Available in:

Part#	Size
950-107	1" Saw Blade Hub
950-220	5/8" Saw Blade Hub

Coupling Nuts

Available in:

Southland Tool

Part#	Description:	Size:
CN-1-1	5/16" Coarse Thread Clockwise Nut	5/16" Diameter
CN-1-2	5/16" Fine Thread Counter Clockwise Nut	5/16" Diameter
CN-1-3	3/8" Coarse Thread Clockwise Nut	3/8" Diameter
CN-1-4	3/8" Fine Thread Counter Clockwise Nut	3/8" Diameter
CN-1-5	0.375 Coarse Thread Clockwise Nut	0.375 Diameter
CN-1-6	0.375 Fine Thread Counter Clockwise Nut	0.375 Diameter
CN-1-7	0.393 Coarse Thread Clockwise Nut	0.393 Diameter
CN-1-8	0.393 Fine Thread Counter Clockwise Nut	0.393 Diameter
CN-1-9	0.415 Coarse Thread Clockwise Nut	0.415 Diameter
CN-1-10	0.415 Fine Thread Counter Clockwise Nut	0.415 Diameter



3 Blade Cutter Chucks

Available in:



Southland Tool Part#	Description:	Size:
CH-1-1	5/16" Chuck with Adapter Rod	5/16"
CH-1-2	3/8" Chuck with Adapter Rod	3/8"
CH-1-3	0.375 Chuck with Set Screw Connection	0.375
CH-1-4	0.393 Chuck with Set Screw Connection	0.393
CH-1-5	0.415 Chuck with Set Screw Connection	0.415

Flat Blades for 3 Blade Cutter

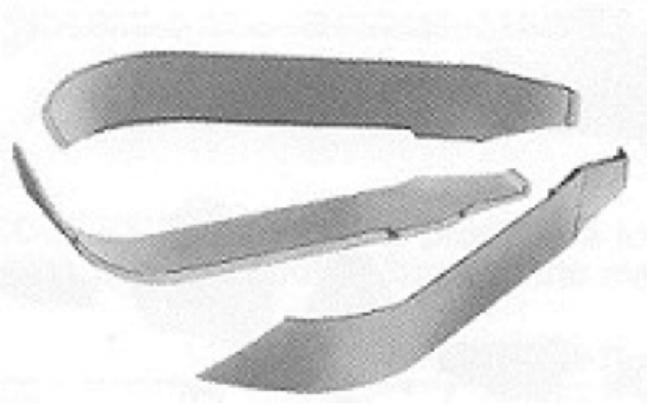
Available in:



Southland Tool Part#	Description:	Type:	Size:
FB-4	4" Flat Blade for 3 Blade Chuck. Price Per Blade	Flat	4" Long
FB-6	6" Flat Blade for 3 Blade Chuck. Price Per Blade	Flat	6" Long
FB-8	8" Flat Blade for 3 Blade Chuck. Price Per Blade	Flat	8" Long
FB-10	10" Flat Blade for 3 Blade Chuck. Price Per Blade	Flat	10" Long

Puma Double Sided Curved Blades for 3 Blade Cutter

Available in:



Southland Tool Part#	Description:	Type:	Size:
CB-4	4" Curved Blade for 3 Blade Chuck. Price Per Blade	Curved	4" Long
CB-6	6" Curved Blade for 3 Blade Chuck. Price Per Blade	Curved	6" Long
CB-8	8" Curved Blade for 3 Blade Chuck. Price Per Blade	Curved	8" Long

Puma Fang Saw Cutter Heavy Duty

Available in:



Southland Tool Part#	Description:	Size:
PFHD-6	6" Heavy Duty Fang Cutter with 1" Hub	6"
PFHD-8	8" Heavy Duty Fang Cutter with 1" Hub	8"
PFHD-10	10" Heavy Duty Fang Cutter with 1" Hub	10"

Flex Saw Blades

Available in:



Part#	Size
7700-4	4" Flex Saw Blade
7700-6	6" Flex Saw Blade
7700-8	8" Flex Saw Blade
7700-10	10" Flex Saw Blade
7700-12	12" Flex Saw Blade
7700-15	15" Flex Saw Blade
7700-18	18" Flex Saw Blade

Combo Cutter with Curved or Flat Blades and Concave Root Saws

Available in:



Southland Tool Part#	Description:	Type:	Size:
SVC-6	6" City Combo Cutter, Includes Blades and Saw 5/16" Rod	Combo	6" Diameter
SVC-8	8" City Combo Cutter, Includes Blades and Saw 5/16" Rod	Combo	8" Diameter
SVC-10	10" City Combo Cutter, Includes Blades and Saw 5/16" Rod	Combo	10" Diameter
SVC-12	12" City Combo Cutter, Includes Blades and Saw 5/16" Rod	Combo	12" Diameter

PVC Tap Cutters



Available in:

Southland Tool

Part#	Description:	Size:
CTS-6	6" PVC Tap Cutter	6"
CTS-8	8" PVC Cutter	8"
CTS-10	10" PVC Tap Cutter	10"
CTS-12	12" PVC Tap Cutter	12"
CTS-15	15" PVC Tap Cutter	15"

Diamond Tap Cutters



Available in:

Southland Tool

Part#	Description:	Size:
DTC-6	6" Diamond Tap Cutter	6"
DTC-8	8" Diamond Tap Cutter	8"
DTC-10	10" Diamond Tap Cutter	10"
DTC-12	12" Diamond Tap Cutter	12"
DTC-15	15" Diamond Tap Cutter	15"



Arrow Diamond Tipped Cutters

Available in:

Southland Tool

Part#	Description:	Size:
ADC-6	6" Arrow Diamond Point Cutter	6"
ADC-8	8" Arrow Diamond Point Cutter	8"
ADC-10	10" Arrow Diamond Point Cutter	10"
ADC-12	12" Arrow Diamond Point Cutter	12"
ADC-15	15" Arrow Diamond Point Cutter	15"



Square Bar Corkscrew

Available in:

Southland Tool

Part#	Description:	Size:
E2-1	2" Square Bar Corkscrew Use with 5/16" Rod	2" Diameter
E2-2	2" Square Bar Corkscrew Use with 3/8" Rod	2" Diameter
E3-1	3" Square Bar Corkscrew Use with 5/16" Rod	3" Diameter
E3-2	3" Square Bar Corkscrew Use with 3/8" Rod	3" Diameter
E4-1	4" Square Bar Corkscrew Use with 5/16" Rod	4" Diameter
E4-2	4" Square Bar Corkscrew Use with 3/8" Rod	4" Diameter
E5-1	5" Square Bar Corkscrew Use with 5/16" Rod	5" Diameter
E5-2	5" Square Bar Corkscrew Use with 3/8" Rod	5" Diameter
E6-1	6" Square Bar Corkscrew Use with 5/16" Rod	6" Diameter
E6-2	6" Square Bar Corkscrew Use with 3/8" Rod	6" Diameter
E8-1	8" Square Bar Corkscrew Use with 5/16" Rod	8" Diameter



Augers

Available in:

Southland Tool

Part#	Description:	Size:
A2-1	2" Auger Use with 5/16" Rod	2" Diameter
A2-2	2" Auger Use with 3/8" Rod	2" Diameter
A3-1	3" Auger Use with 5/16" Rod	3" Diameter
A3-2	3" Auger Use with 3/8" Rod	3" Diameter
A4-1	4" Auger Use with 5/16" Rod	4" Diameter
A4-2	4" Auger Use with 3/8" Rod	4" Diameter
A5-1	5" Auger Use with 5/16" Rod	5" Diameter
A5-2	5" Auger Use with 3/8" Rod	5" Diameter
A6-1	6" Auger Use with 5/16" Rod	6" Diameter
A6-2	6" Auger Use with 3/8" Rod	6" Diameter
A8-1	8" Auger Use with 5/16" Rod	8" Diameter
A8-2	8" Auger Use with 3/8" Rod	8" Diameter
A10-1	10" Auger Use with 5/16" Rod	10" Diameter
A10-2	10" Auger Use with 3/8" Rod	10" Diameter



Premium Puma Rods

Available in:

Southland Tool

Part#	Description:	Size:
STR-1-1	5/16" X 36" Premium Sewer Rod Complete with Coupling	5/16" X 36"
STR-1-2	5/16" X 39" Premium Sewer Rod Complete with Coupling	5/16" X 39"
STR-1-3	5/16" X 48" Premium Sewer Rod Complete with Coupling	5/16" X 48"
STR-1-4	5/16" X 60" Premium Sewer Rod Complete with Coupling	5/16" X 60"
STR-1-5	5/16" X 72" Premium Sewer Rod Complete with Coupling	5/16" X 72"
STR-1-6	3/8" X 36" Premium Sewer Rod Complete with Coupling	3/8" X 36"
STR-1-7	3/8" X 39" Premium Sewer Rod Complete with Coupling	3/8" X 39"



Puma Silver Rods

Available in:

Southland Tool

Part#	Description:	Size:
STB-1-1	5/16" X 36" Sewer Rod Complete with Coupling	5/16" X 36"
STB-1-2	5/16" X 39" Sewer Rod Complete with Coupling	5/16" X 39"
STB-1-3	5/16" X 48" Sewer Rod Complete with Coupling	5/16" X 48"
STB-1-4	5/16" X 60" Sewer Rod Complete with Coupling	5/16" X 60"
STB-1-5	5/16" X 72" Sewer Rod Complete with Coupling	5/16" X 72"

Power Rod Reels

Available in:



Southland Tool

Part#	Description:	Size:
RR-1-1	Rod Reel Made From 1/2" Round Bar with 500' Capacity and Can Be Used with the Tripod Street Stand or the Trailer Type	500' Capacity
RR-1-2	Rod Reel Stand Street Type with Guide Tube and Articulated Elbow Along with 3 Leg Support with the Perfect Angle for Payout	500' Capacity

Continuous Rod

Available in:



Southland Tool

Part#	Description:	Size:
STC-1-1	0.312 Continuous Rod	0.312 Diameter
STC-1-2	0.375 Continuous Rod	0.375 Diameter
STC-1-3	0.393 Continuous Rod	0.393 Diameter
STC-1-4	0.415 Continuous Rod	0.415 Diameter
STC-1-5	0.461 Continuous Rod	0.461 Diameter

Continuous Rod Transfer Rack

Available in:



Southland Tool

Part#	Description:	Type:
CRTR-1	6 Spoke Heavy Duty Transfer Rack and Guide Arm	6 Spoke



Rod Hose Guides

Available in:

Southland Tool

Part#	Description:	Type:	Size:
LW-7	7' Light Weight Hose Guide with Flex-Metallic Liner	Light Weight	7' Length
LW-10	10' Light Weight Hose Guide with Flex-Metallic Liner	Light Weight	10' Length
LW-15	15' Light Weight Hose Guide with Flex-Metallic Liner	Light Weight	15' Length
LW-18	18' Light Weight Hose Guide with Flex-Metallic Liner	Light Weight	18' Length
LW-20	20' Light Weight Hose Guide with Flex-Metallic Liner	Light Weight	20' Length
LW-22	22' Light Weight Hose Guide with Flex-Metallic Liner	Light Weight	22' Length
LW-24	24' Light Weight Hose Guide with Flex-Metallic Liner	Light Weight	24' Length
LW-25	25' Light Weight Hose Guide with Flex-Metallic Liner	Light Weight	25' Length
HD-7	7' Heavy Duty Hose Guide with Metallic Liner	Heavy Duty	7' Length
HD-10	10' Heavy Duty Hose Guide with Metallic Liner	Heavy Duty	10' Length
HD-15	15' Heavy Duty Hose Guide with Metallic Liner	Heavy Duty	15' Length
HD-18	18' Heavy Duty Hose Guide with Metallic Liner	Heavy Duty	18' Length
HD-20	20' Heavy Duty Hose Guide with Metallic Liner	Heavy Duty	20' Length
HD-22	22' Heavy Duty Hose Guide with Metallic Liner	Heavy Duty	22' Length
HD-24	24' Heavy Duty Hose Guide with Metallic Liner	Heavy Duty	24' Length
HD-25	25' Heavy Duty Hose Guide with Metallic Liner	Heavy Duty	25' Length



Power Rod Drive Trailers

Available in:

Southland Tool

Part#	Description:	Type:	Size:
SPD-3	3 HP Power drive Includes Speed Chuck, specify 5/16" or 3/8"	Trailer	3 HP
SPD-6.5	6.5 HP Power drive Includes Speed Chuck, specify 5/16" or 3/8"	Trailer	6.5HP

Special Boring Tools

Available in:

Southland Tool

Part#	Description:	Size:
T6-1	5/16" Loop Swivel Tool	5/16"
T6-2	3/8" Loop Swivel Tool	3/8"
T7-1	5/16" Sand Leader with Adapter Rod	5/16"
T7-2	3/8" Sand Leader with Adapter Rod	3/8"
T9-1	5/16" Bullet Tool with Adapter Rod	5/16"
T9-2	3/8" Bullet Tool with Adapter Rod	3/8"
T10-1	5/16" Pilot Bullet Tool with Pullout Swivel with Adapter Rod	5/16"
T10-2	3/8" Pilot Bullet Tool with Pullout Swivel with Adapter Rod	3/8"
T15-1	5/16" Winters Root Saw Coupling. Combine with Any 2 Root Saws.	5/16"





Plumbers Rods and Tools

Available in:

Southland Tool	Description:	Type:	Size:
Part#			
P5-13	1/4" X 6' No. 5 Plumbers Rods Hex Coupling	No. 5	1/4" X 6'
P5-1	Rod Frame for No. 5 Rods	No. 5	
P5-2	2" Round Wire Coiled Corkscrew	No. 5	2" Diameter
P5-3	3" Double Round Wire Coiled Corkscrew	No. 5	3" Diameter
P5-4	4" Round Wire Coiled Corkscrew	No. 5	4" Diameter
P5-5-2	2" Root Cutter with Spade Blade	No. 5	2" Diameter
P5-5-3	3" Root Cutter with Spade Blade	No. 5	3" Diameter
P5-5-4	4" Root Cutter with Spade Blade	No. 5	4" Diameter
P5-6	2" Spear Head with Coiled Pig Tail	No. 5	2" Diameter
P5-7	Pick Up with Coiled Pig Tail	No. 5	
P5-8	Assembly Tool for No. 5 Rods	No. 5	
P5-9	Electric Drill Adapter	No. 5	
P5-10	Pull Out Turning Handle	No. 5	
	Complete No.5 Set:		
P5-SET	(17) P5-13 1/6" X 6' Rods, (1) P5-1 Rod Frame, (1) P5-2 2" Corkscrew, (1) P5-3 4" Double Screw, (1) P5-4 4" Corkscrew, (1) P5-5-3 3" Root Cutter, (1) P5-6 Spear Head, (1) P5-7 Pick Up Tool, (1) P5-8 Assembly Tool, (1) P5-9 Electric Drill Adapter, (1) P5-10 Turning Handle.	No. 5	

PB-1	1/4" X 6' "B" Rod Complete with Round Coupling	B	1/4" X 6'
PB-2	Pick Up Tool	B	
PB-3	4" Corkscrew	B	4"
PB-4	2" Corkscrew	B	2"
PB-5-3	3" Root Cutter	B	3"
PB-5-4	4" Root Cutter	B	4"
PB-6	Spear Head	B	
PB-7	Assembly Tool	B	
PB-8	Turning Handle	B	
PB-9	4" Tapered Corkscrew (Not in Set)	B	4"
PB-10	2" Tapered Corkscrew (Not in Set)	B	2"
PB	Complete B Plumbers Set: (17) Rods, (1) of each B Tool Listed	B	
SSU-1	1' O.D. of 1/4" Wire X 12" Long with Clockwise and Counter Clockwise 5/16" Nuts	Coiled	1/4" X 12"
SSU-2	Universal Springs 1.25" Diameter X 12" Long with Clockwise and Counter Clockwise 5/16" Nuts	Coiled	1.25" X 12"
SSCR-3	1" X 3' Coiled Rod with Clockwise and Counter Clockwise 5/16" Nuts	Coiled	1" X 3'
SCR-25	1" X 25' Coiled Rod with Female 5/16" Pig Tails Each Side	Coiled	1" X 25'
SCR-3A	1" X 3' Coiled Rod with Auger Coupling X 5/16" Pig Tail	Coiled	1" X 3'
PF-7	1" X 25' Coiled Rod 1/4" Plumber Tool Male X Female	Coiled	1" X 25'
PF-20M	1" X 3' Long Coiled Rod with 3" Root Saw X 5/16"	Coiled	1" X 3'
PF-21M	1" X 3' Long Coiled Rod with 4" Root Saw X 5/16"	Coiled	1" X 3'
PF-22M	1" X 3' Long Coiled Rod with 6" Root Saw X 5/16"	Coiled	1" X 3'

Root Cutter Hubs

Available in:



Southland Tool Part#	Description:	Type:
RSH-1A	1" Hub for Hydraulic Root Cutter Standard. Saw 1/8"	1" Hub
RSH-1B	1" Hub for Hydraulic Root Cutter Heavy Dury. Saw 3/16"	1" Hub
RSH-58	5/8" Hub for Hydraulic Root Cutter Saw	5/8" Hub
3BHC-1	3 Blade Chuck for 1" Hydraulic Root Cutter	1"

Couplings for Square Stock Corkscrew

Available in:



Southland Tool Part#	Description:	Size:
CS-1-1	5/16" Couplings for Square Stock Corkscrew. To be Used with Adapter Rods	5/16" Diameter
CS-1-2	3/8" Couplings for Square Stock Corkscrew. To be Used with Adapter Rods	3/8" Diameter
CS-1-3	0.375 with Set Screw Connections	0.375
CS-1-4	0.393 with Set Screw Connections	0.393
CS-1-5	0.415 with Set Screw Connections	0.415
CS-1-6	0.461 with Set Screw Connections	0.461



Rod, Tool and Adapter Couplings For Standard Root Saws

Available in:

Southland Tool Part#	Description:	Type:	Size:
CR-1-1	5/16" to be Used with Adapter Rod Tools	Standard	5/16" Diameter
CR-1-2	3/8" to be Used with Adapter Rod Tools	Standard	3/8" Diameter
CR-1-3	0.375 with Set Screw Connections	Set Screw	0.375
CR-1-4	0.393 with Set Screw Connections	Set Screw	0.393
CR-1-5	0.415 with Set Screw Connections	Set Screw	0.415
CR-1-6	0.461 with Set Screw Connections	Set Screw	0.461



Rod, Tool and Adapter Couplings For Augers 2"-4"

Available in:

Southland Tool Part#	Description:	Type:	Size:
CA-1-1	5/16" to be Used with Adapter Rods	Standard	5/16" Diameter
CA-1-2	3/8" to be Used with Adapter Rods	Standard	3/8" Diameter
CA-1-3	0.375 with Set Screw Connections	Set Screw	0.375
CA-1-4	0.393 with Set Screw Connections	Set Screw	0.393
CA-1-5	0.415 with Set Screw Connections	Set Screw	0.415
CA-1-6	0.461 with Set Screw Connections	Set Screw	0.461
CA-1-7	0.375 with Hook Type Connection	Hook Type	0.375



Rod, Tool and Adapter Couplings For Augers 6" and Up

Rod, Tool and Adapter Couplings For Augers 6" and Up

Available in:

Southland Tool Part#	Description:	Type:	Size:
CA-2-1	5/16" to be Used with Adapter Rods	Standard	5/16" Diameter
CA-2-2	3/8" to be Used with Adapter Rods	Standard	3/8" Diameter
CA-2-3	0.375 with Set Screw Connections	Set Screw	0.375
CA-2-4	0.393 with Set Screw Connections	Set Screw	0.393
CA-2-5	0.415 with Set Screw Connections	Set Screw	0.415
CA-2-6	0.461 with Set Screw Connections	Set Screw	0.461
CA-2-7	0.375 with Hook Type Connection	Hook Type	0.375



Rod, Tool and Adapter Couplings For Heavy Duty Root Saws

Available in:

Southland Tool Part#	Description:	Type:	Size:
CRHD-1-1	5/16" to be Used with Adapter Rod Tools	Heavy Duty	5/16" Diameter
CRHD-1-2	3/8" to be Used with Adapter Rod Tools	Heavy Duty	3/8" Diameter
CRHD-1-3	0.375 with Set Screw Connections	Set Screw	0.375
CRHD-1-4	0.393 with Set Screw Connections	Set Screw	0.393
CRHD-1-5	0.415 with Set Screw Connections	Set Screw	0.415
CRHD-1-6	0.461 with Set Screw Connections	Set Screw	0.461
CRHD-1-7	0.375 with Hook Type Connection	Hook Type	0.375



Rod, Tool and Adapter Couplings

Available in:

Southland Tool

Part#

Description:

AC-1-1	0.375 Set Screw Type to 3/8" Coarse Clockwise Thread
AC-1-2	0.393 Set Screw Type to 3/8" Coarse Clockwise Thread
AC-1-3	0.415 Set Screw Type to 3/8" Coarse Clockwise Thread
AC-1-4	0.461 Set Screw Type to 3/8" Coarse Clockwise Thread
AC-2-1	0.375 Fine Counter Clockwise Thread Hook to 5/16" Coarse Clockwise Thread
AC-2-2	0.393 Fine Counter Clockwise Thread Hook to 5/16" Coarse Clockwise Thread
AC-2-3	0.415 Fine Counter Clockwise Thread Hook to 5/16" Coarse Clockwise Thread
AC-2-4	0.461 Fine Counter Clockwise Thread Hook to 5/16" Coarse Clockwise Thread
AC-3-1	0.375 Set Screw Type to 5/16" Coarse Clockwise Thread
AC-3-2	0.393 Set Screw Type to 5/16" Coarse Clockwise Thread
AC-3-3	0.415 Set Screw Type to 5/16" Coarse Clockwise Thread
AC-3-4	0.461 Set Screw Type to 5/16" Coarse Clockwise Thread

Couplings for Sectional and Continuous Rod



Available in:

Southland Tool

Part#

Description:

Size:

CC-1-1

5/16" Counter
Clockwise Fine
Thread X Clockwise
Coarse Coupling

5/16" Diameter

CC-1-2

5/16" Fine Thread
Counter Clockwise
Nut

5/16" Diameter

Rod Pick Up Tools



Available in:

Southland Tool

Part#

Description:

Size:

P1-1

5/16" Pick Up Tool
for Sectional Rod

5/16"

P1-2

3/8" Pick Up Tool for
Sectional Rod

3/8"

Rod Spear Head Tools

Available in:



Southland Tool

Part#	Description:	Size:
B2-1	2" Spear Head with 5/16" Adapter Rod and Coupling	5/16"
B2-2	2" Spear Head with 3/8" Adapter Rod and Coupling	3/8"
B4-1	4" Spear Head with 5/16" Adapter Rod and Coupling	5/16"

Rod Pull Out and Turning Tools

Available in:



Southland Tool

Part#	Description:	Size:
T3-1	5/16" Pull Out Tool	5/16"
T3-2	3/8" Pull Out Tool	3/8"
T4-1	5/16" Pull Out Toll and Twisting Handle	5/16"
T4-2	3/8" Pull Out Toll and Twisting Handle	3/8"
T5-1	Bar Turning Handle for 5/16" and 3/8"	5/16" & 3/8"
T8	Round Rod Puller Fits 1/4" to 3/8"	1/4"-3/8"
T11	Rod Turning Ratchet Single for 5/16" Rods	5/16"
T12	Rod Turning Ratchet One Man Double	5/16"

Rod Assembly Tools



Available in:

Southland Tool Part#	Description:	Size:
T1-1	5/16" Assembly Wrench	5/16"
T1-2	3/8" Assembly Wrench	3/8"
T2-1	5/16" Assembly Turning Handle	5/16"
T2-2	3/8" Assembly Turning Handle	3/8"

Adapter Rods



Available in:

Southland Tool Part#	Description:	Size:
AR-1-1	5/16" Adapter Rod	5/16"
AR-1-2	3/8" Adapter Rod	3/8"
AR-1-SS	5/16" Super Short	5/16"
AR-1-2SS	3/8" Super Short	3/8"



Power Rod Trailer Parts

Available in:

Southland Tool

Part#

Description:

RR-1-4	Lower Manhole Rigid Rod Guide. Connects to 1.5" Pipe to Allow Rods to Enter Sewer at the Correct Angle
RR-1-5	Foot Jack Support. Fits on the Ends of Guide
RR-1-6	Back Jack Support. Keeps Pressure in the Guide System by Supporting the Guide Against Back Wall of Manhole.
RR-1-7	Manhole Jack Support. Used to Support the 1.5" Guide Tube Against the Manhole Ring.
RR-1-8	Complete Manhole Set-Up Kit with 21' of Galvanized Pipe in Sections with RR-1-4, RR-1-5, RR-1-6 and RR-1-7.
H-10-1	Carry All Trailer. Carries Tools, Rods and Power Drive to the Job site. Includes a Lockable Tool Box and an Open Tool Box and Comes with Standard 2" Ball Hitch
H-11-1	Stop, Tail and Turning Lights
H-12-1	Pintle Ring Hitch
H-13-1	Electric Brakes

Sewer Brush

Available in:

Southland Tool

Part#	Description:	Type:	Size:
C-4-1	4" Porcupine Turn Type for 5/16" Rods	Turn	4"
C-4-2	4" Porcupine Turn Type for 3/8" Rods	Turn	4"
C-6-1	6" Porcupine Turn Type for 5/16" Rods	Turn	6"
C-6-2	6" Porcupine Turn Type for 3/8" Rods	Turn	6"



Porcupines

Available in:

Southland Tool

Part#	Description:	Type:	Size:
D-4-1	4" Porcupine Turn Type for 5/16" Rods	Turn	4"
D-4-2	4" Porcupine Turn Type for 3/8" Rods	Turn	4"
D-6-1	6" Porcupine Turn Type for 5/16" Rods	Turn	6"
D-6-2	6" Porcupine Turn Type for 3/8" Rods	Turn	6"
D-8-1	8" Porcupine Turn Type for 5/16" Rods	Turn	8"
D-8-2	8" Porcupine Turn Type for 3/8" Rods	Turn	8"



Manhole Hooks

Available in:



Part#	Size:	Type:
MHH-918	18" Manhole Hook 90°	90°
MHH-930	30" Manhole Hook 90°	90°
MHH-18	18" Manhole Hook Flat Handle	Flat Handle
MHH-26	26 1/2" Manhole Hook Flat Handle	Flat Handle

Southland Tool Manhole Hooks

Manhole Hooks

Available in:



Southland Tool Part#	Description:	Size:
POOK	Double Sided Pick and Manhole Hook	
MSRH-1	Manhole Hook, Triangle Handle, 39" Length, 90°	39" Length
MSRH-2	Manhole Hook, Triangle Handle, 27" Length, Flat	27" Length
MSRH-3	Manhole Hook, Triangle Handle, 39" Length, Flat	39" Length



Easement Roller

Available in:

Part#
D0-90

Description:
Easement Roller

Sewer Pipe Plug Flow-Thru Style

Sewer Pipe Plug Flow-Thru Style

Available in:



Part#	Description:	Size:	Type:
UE070-461	4-8" Flow-Thru Style Sewer Plug	4-8"	Flow-Thru Style
UE070-6101	6-10" Flow-Thru Style Sewer Plug	6-10"	Flow-Thru Style
UE070-8121	8-12" Flow-Thru Style Sewer Plug	8-12"	Flow-Thru Style
UE070-12181	12-18" Flow-Thru Style Sewer Plug	12-18"	Flow-Thru Style
UE070-15301	18-30" Flow-Thru Style Sewer Plug	18-30"	Flow-Thru Style



Sewer Pipe Plug Bag Style

Sewer Pipe Plug Bag Style

Available in:

Part#	Description:	Size:	Type:
UE060-46	4-6" Bag Style Sewer Plug	4-6"	Bag Style
UE060-610	6-10" Bag Style Sewer Plug	6-10"	Bag Style
UE060-812	8-12" Bag Style Sewer Plug	8-12"	Bag Style
UE060-1218	12-18" Bag Style Sewer Plug	12-18"	Bag Style
UE060-1530	18-30" Bag Style Sewer Plug	18-30"	Bag Style
UE060-2036	20-36" Bag Style Sewer Plug	20-36"	Bag Style

Foam Filled Poles Threaded Ends

Available in:

Southland Tool

Part#	Description:	Type:
FF6T	Single Male X Female Pole	6' Length
FF3T	Single Male X Female Pole	3' Length
FF24T	Set of 3 Male X Female Pole and 1 Female X Rubber End Pole	24' Length
FF21T	Set of 3 Male X Female 6' Pole and 1 Male X Female 3' Pole	21' Length

Foam Filled Poles Snap Style

Available in:

Southland Tool

Part#	Description:	Type:
FF6	Single Male X Female Pole	6' Length
FF3	Single Male X Female Pole	3' Length
FF24	Set of 3 Male X Female Pole and 1 Female X Rubber End Pole	24' Length
FF21	Set of 3 Male X Female 6' Pole and 1 Male X Female 3' Pole	21' Length

Debris Grit Basket To Use With Fiberglass Poles

Available in:

Southland Tool

Part#

Description:

Type:

DB-6S

Debris Grit Basket 6" with Fiberglass Pole Connector Solid Half Bottom and Back

6" Diameter

DB-8S

Debris Grit Basket 8" with Fiberglass Pole Connector Solid Half Bottom and Back

8" Diameter

DB-10S

Debris Grit Basket 10" with Fiberglass Pole Connector Solid Half Bottom and Back

10" Diameter

DB-12S

Debris Grit Basket 12" with Fiberglass Pole Connector Solid Half Bottom and Back

12" Diameter



Flat Traps

Available in:

Southland Tool

Part#

Description:

Type:

ST.FT-6

6" Flat Trap Basket

6" Wide X 6" High

ST.FT-8

8" Flat Trap Basket

8" Wide X 6" High

ST.FT-10

10" Flat Trap Basket

10" Wide X 6" High

ST.FT-12

12" Flat Trap Basket

12" Wide X 8" High

ST.FT-15

15" Flat Trap Basket

15" Wide X 8" High



Debris Basket With 25' Rope

Available in:



Southland Tool Part#	Description:	Type:
DBR-6	Debris Basket 6" With Rope	6" Diameter
DBR-8	Debris Basket 8" With Rope	8" Diameter
DBR-10	Debris Basket 10" With Rope	10" Diameter
DBR-12	Debris Basket 12" With Rope	12" Diameter
DBR-15	Debris Basket 15" With Rope	15" Diameter

Debris Cylinders

Available in:



Southland Tool Part#	Description:	Type:
DC-6	Debris Cylinder for 6" Pipe	6" Diameter
DC-8	Debris Cylinder for 8" Pipe	8" Diameter
DC-10	Debris Cylinder for 10" Pipe	10" Diameter
DC-12	Debris Cylinder for 12" Pipe	12" Diameter

Debris Grit Basket With 25' Rope



Available in:

Southland Tool Part#	Description:	Type:
DBR-6S	Debris Grit Basket 6" with 25' Rope	6" Diameter
DBR-8S	Debris Grit Basket 8" with 25' Rope	8" Diameter
DBR-10S	Debris Grit Basket 10" with 25' Rope	10" Diameter
DBR-12S	Debris Grit Basket 12" with 25' Rope	12" Diameter

Aluminum Debris Traps With Lowering Rope



Available in:

Southland Tool Part#	Description:	Type:
ADR-6	Aluminum Debris/Sand Trap 6" with 25' Lowering Rope	6"
ADR-8	Aluminum Debris/Sand Trap 8" with 25' Lowering Rope	8"
ADR-10	Aluminum Debris/Sand Trap 10" with 25' Lowering Rope	10"
ADR-12	Aluminum Debris/Sand Trap 12" with 25' Lowering Rope	12"

Debris Basket To Use With Fiberglass Poles

Available in:



Southland Tool Part#	Description:	Type:
DB-6	Debris Basket 6" for Fiberglass Poles	6" Diameter
DB-8	Debris Basket 8" for Fiberglass Poles	8" Diameter
DB-10	Debris Basket 10" for Fiberglass Poles	10" Diameter
DB-12	Debris Basket 12" for Fiberglass Poles	12" Diameter
DB-15	Debris Basket 15" for Fiberglass Poles	15" Diameter

Aluminum Sand Trap

Available in:



Part#	Description:	Size:
UST-6	For 6" Diameter Pipe with Rope Wall .083	6" Aluminum Sand Trap
UST-8	For 8" Diameter Pipe with Rope Wall .100	8" Aluminum Sand Trap
UST-10	For 10" Diameter Pipe with Rope Wall .094	10" Aluminum Sand Trap
UST-12	For 12" Diameter Pipe with Rope Wall .094	12" Aluminum Sand Trap
UST-15	For 15" Diameter Pipe with Rope Wall .107	15" Aluminum Sand Trap
UST-18	For 18" Diameter Pipe with Rope Wall .107	18" Aluminum Sand Trap

Sand Traps

Available in:

Southland Tool

Part#	Description:	Size:
SST-6	6" Sand Trap with 25' Rope	6" Diameter
SST-8	8" Sand Trap with 25' Rope	8" Diameter
SST-10	10" Sand Trap with 25' Rope	10" Diameter
SST-12	12" Sand Trap with 25' Rope	12" Diameter
SST-15	15" Sand Trap with 25' Rope	15" Diameter



Scoopa Screens

Available in:

Southland Tool

Part#	Description:	Type:
SCCS-6	6" Scoopa Screen for Fiberglass Poles	6"
SCCS-8	8" Scoopa Screen for Fiberglass Poles	8"
SCCS-10	10" Scoopa Screen for Fiberglass Poles	10"
SCCS-12	12" Scoopa Screen for Fiberglass Poles	12"



Aluminum Debris Traps Used With Fiberglass Poles

Available in:



Southland Tool

Part#	Description:	Type:
ADT-6	Aluminum Debris/Sand Trap 6" for Use with Fiberglass Poles	6"
ADT-8	Aluminum Debris/Sand Trap 8" for Use with Fiberglass Poles	8"
ADT-10	Aluminum Debris/Sand Trap 10" for Use with Fiberglass Poles	10"
ADT-12	Aluminum Debris/Sand Trap 12" for Use with Fiberglass Poles	12"

Scoopas

Scoopas

Available in:



Southland Tool

Part#	Description:	Type:
SC-6	6" Scoopa for Fiberglass Poles	6"
SC-8	8" Scoopa for Fiberglass Poles	8"
SC-10	10" Scoopa for Fiberglass Poles	10"
SC-12	12" Scoopa for Fiberglass Poles	12"



Debris Grabbers, Hooks, Claws, Shovels, Spoons, Magnets

Available in:

Southland Tool

Part#	Description:	Type:
4PG-1	4 Pronged Debris Grabber 8" Wide	8" Width
3PG-1	3 Pronged Debris Grabber 6" Wide	6" Width
BITZ-R	12" Long Bitz Rake. Great for Getting Material Out of Invert and Can Be Inserted Into Pipe for Catching Hanging Material.	12" Length
CRW-1	Craw for Attaching to Poles, Includes Instructions, Craw, Rope, PVC Stay, One-Way Cleat and Hardware. Everything Needed to Connect to Fiberglass Poles and Extend to 24' and Up, Depending on the Desired Length.	
SR3-1	3 Pronged 90° Rake	90°
PS-1	9" Diameter Rounded Catch Basin Spoon. Connects to All SouthLand Tool Poles	9" Diameter
CAM-1	Camera Gaffing Hook. Tested to 200LBS.	
CAM-2	Small Diameter Camera Gaffing Hook 3"	3"

Handy-Clams

Available in:



Southland Tool

Part#	Description:	Type:
SHC-6	Handy Clam 6' Long with Small 12" Bucket	6' Length
SHC-8	Handy Clam 8' Long with Small 12" Bucket	8' Length
SHC-10	Handy Clam 10' Long with Small 12" Bucket	10' Length
SHC-12	Handy Clam 12' Long with Small 12" Bucket	12' Length
SHC-16	Handy Clam 16' Long with Small 12" Bucket	16' Length

Septic Cleaning Tools

Septic Cleaning Tools with 3/8" Female NPT

Available in:



Southland Tool

Part#	Description:	Size:
SV-5	9" Curved Spud (TOP LEFT PIC)	9"
SV-1	9" Sludge Hoe with 2 Holes (TOP MIDDLE PIC)	9"
SV-3	9" Sludge Spud (TOP RIGHT PIC)	9"
SV-6	15" Curved Spud (MIDDLE LEFT PIC)	15"
SV-2	15" Sludge Hoe with 2 Holes (CENTER PIC)	15"
SV-4	15" Sludge Spud (MIDDLE RIGHT PIC)	15"

Osh Style Wood Spoons

Osh Style Wood Spoons

Available in:



Southland Tool

Part#	Description:	Type:
PS-6	1.5" Thick Ash Handle and Catch Basin Spoon (1 Piece)	6' Length
PS-8	1.5" Thick Ash Handle and Catch Basin Spoon (1 Piece)	8' Length
PS-10	1.5" Thick Ash Handle and Catch Basin Spoon (1 Piece)	10' Length
PS-102	1.5" Thick Ash Handle and Catch Basin Spoon (2 Piece)	10' Length
PS-122	1.5" Thick Ash Handle and Catch Basin Spoon (2 Piece)	12' Length

Catch Basin Spoon Assemblies

Available in:



Southland Tool

Part#	Description:	Type:
FS-6	Catch Basin Spoon with One 6' Fiberglass Pole	6' Length
FS-12	Catch Basin Spoon with One 12' Fiberglass Pole	12' Length
FS-18	Catch Basin Spoon with One 18' Fiberglass Pole	18' Length

Hose Protection Equipment

Available in:



Southland Tool Part#	Description:	Type:
SJS-HD	Heavy Duty Puma Hose Guide 3"	3" Diameter
SAMR-1	Upper Manhole Roller Guide (Aluminum Body) Nylon Roller	Aluminum
SASR-1	Upper Manhole Roller Guide (Steel Body) Nylon Roller	Steel
SAYR-1	Upper Manhole "Y" Roller for 8" Tube	Y - Type

Top Manhole Roller

Top Manhole Roller

Available in:



Part#	Size:	Type:
D0-6A	Iron Frame with Nylon Roller	Standard
D0-6B	Iron Frame with Aluminum Roller	Heavy Duty
D0-6C	Iron Frame with Nylon Roller	Heavy Duty
D0-6D	Aluminum Frame with Nylon Roller 16 Lbs.	Aluminum

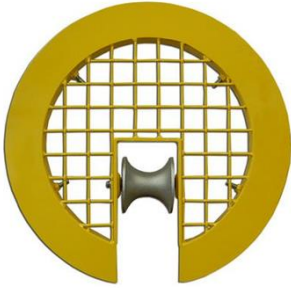


4-Way Roller

Available in:

Part#
S3000-00347

Description:
4-Way Roller Assembly



Safety Manhole Cover

Available in:

Part#
D0-6MRF

Description:
Good for Manholes 20"-26"
in Diameter

Fiberglass Hose Shoe

Available in:

Part#
D0-88

Description:
Hose Level Wind Assembly



Nylon Rollers

Available in:

Part# Description: Size:



Urethane Boom Roller

Available in:

Part#	Description:	Size:
U36989	Urethane Nylon Roller	7" Diameter (1" Core)

Tyger-Tail Hose Guide

Tyger-Tail Hose Guide

Available in:



Part#	Description:	Size:	Type:
D0-69	2" X 36" Tyger-Tail Hose Guide	2" X 36"	Standard
D0-89	3" X 36" Tyger-Tail Hose Guide	3" X 36"	Standard

Heavy Duty Tiger Tail Guide

Available in:



Part#	Description:	Size:	Type:
SJ2-HD	2" X 36" Tyger- Tail Heavy Duty Hose Guide	2" X 36"	Heavy Duty
SJS-HD	3" X 36" Tyger- Tail Heavy Duty Hose Guide	3" X 36"	Heavy Duty



Dye Tablets and Powder

Available in:

Part#	Description:	Size:
J1-OG	Green Tablets	200
J1-OR	Red Tablets	200
J2-1G	Green Powder	1 lb.
J2-5G	Green Powder	5 lb.

Standard Washdown Gun

Standard Washdown Gun

Available in:

Part#	Size:	PSI:
U-357	12 GPM	4000
U-357A	26 GPM	4000



Heavy Duty Washdown Gun

Available in:

Part#	Size:	PSI:
U45109	Heavy Duty 25 GPM	850
U45109A	Heavy Duty 25 GPM	3000



12" Intake Debris Tube - Riveted Flange X Flange 12"-96" (Vac All®)

Available in:



Part#	Size
VE908-12	12" X 12"
VE908-24	12" X 24"
VE908-48	12" X 48"
VE908-72	12" X 72"
VE908-96	12" X 96"

12" Welded Steel Flange & Crown -All Steel

Available in:



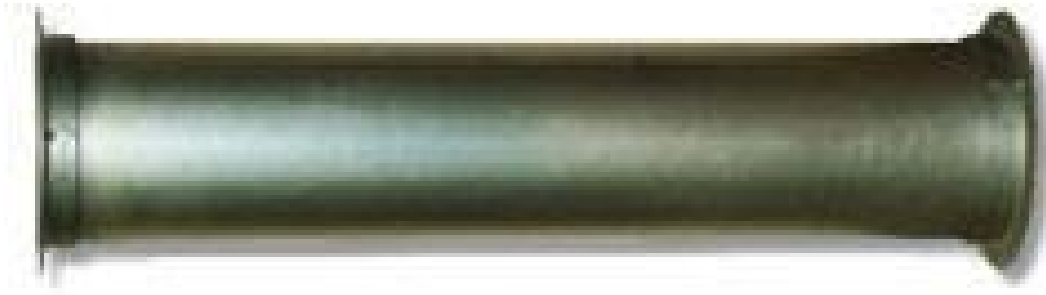
Part#	Size
VE820-36	12" X 36"
VE820-56	12" X 56"
VE820-92	12" X 92"
VE820-96	12" X 96"

12" Extension Tube - Flange X Flange - 12"-96"

Available in:



Part#	Size
VE808-12	12" X 12"
VE808-24	12" X 24"
VE808-36	12" X 36"
VE808-48	12" X 48"
VE808-72	12" X 72"
VE808-96	12" X 96"



8" Intake Tubes w/ Welded Aluminum Flanges (Vactor® and Vac-Con®)

Available in:

Part#	Size
UA25637N	8" X 12"
UA25637K	8" X 28"
UA25637B	8" X 30"
UA25637C	8" X 36"
UA25637M	8" X 48"
UA25637	8" X 60"
UA25637J	8" X 70"
UA25637D	8" X 72"
UA25637P	8" X 78"
UA25637E	8" X 84"
UA25637F	8" X 90"
UA25637A	8" X 96"
UA25637G	8" X 120"
UA25637H	8" X 147"
UA25637L	8" X 180"
UA25637Q	8" X 240"

8" Intake Tubes w/ Riveted Steel Couplers (Aquatech®)

Available in:

Part#	Size
AT238005	8" X 36"
AT238005A	8" X 48"
AT238006	8" X 60"
AT238007	8" X 72"
AT238007A	8" X 78"
AT238007AB	8" X 84"
AT238008	8" X 96"
AT238009	8" X 120"



8" Intake Tubes w/ Bandlock® Style Fittings (Super Products® / Guzzler®)

Available in:

Part#	Size
S8510-00288	8" X 24"
S8510-01373	8" X 36"
S8510-00289	8" X 48"
S8510-01374	8" X 60"
S8510-01374A	8" X 72"
S8510-01375	8" X 84"
S8510-00290	8" X 96"
S8510-01376	8" X 120"
S8510-01376A	8" X 144"
S8510-01421	8" X 240"



8" Intake Tube All Welded Steel - Flanges on Both Ends (Vactor®)

Available in:



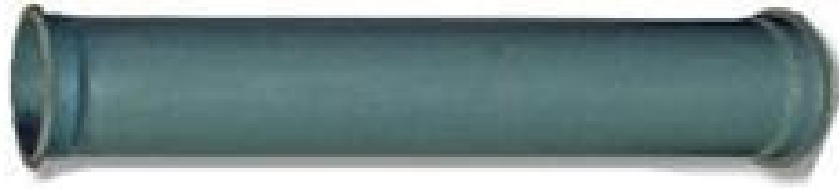
Part#	Size
U53186	8" X 18"
U53186A	8" X 36"
U53186B	8" X 60"
U53186C	8" X 96"
U53186-G	8" X 101"
U53186CD	8" X 102"
U53186E	8" X 107"
U53186D	8" X 120"

8" Hydro-Excavation Tubes - Female Coup-Hydro Kanaflex End w/ Riveted Female Coupler (Aquatech®)



Available in:

Part#	Size
AT238007HE	8" X 72"



8" Extension Tube All Steel -Welded Steel Flanges (Vactor)

Available in:

Part#	Size
U54101C	8" X 6"
U54101A	8" X 10"
U54101B	8" X 12"
U54101E	8" X 18"
U54101F	8" X 20"
U54101H	8" X 24"
U54101G	8" X 28"
U54101K	8" X 30"
U54101N	8" X 36"
U54101Q	8" X 42"
U54101S	8" X 46"
U54101T	8" X 48"
U54101W	8" X 54"
U54101X	8" X 60"
U54101Y	8" X 86"
U54101L	8" X 120"
U54101M	8" X 180"
U54101J	8" X 240"

8" Female Catch Basin Tube w/ Bandlock® Style Fittings (Super Products® / Guzzler®)

Available in:



Part#	Size
S8500-00453DF	8" X 48"
S8500-00453EF	8" X 60"
S8500-00453FF	8" X 72"
S8500-00453JF	8" X 78"
S8500-00453G	8" X 84"
S8500-00453HF	8" X 96"

8" Catch Basin All Steel Tube- Welded Steel Flange & Crown (Vactor®)



Available in:

Part#	Size
US54101X	8" X 60"
US54101Y	8" X 72"
US54101Z	8" X 78"



8" Male Catch Basin Tube w/ Bandlock® Style Fittings (Super Products® / Guzzler®)

Available in:

Part#	Size
S8500-00453	8" X 24"
S8500-00453AM	8" X 30"
S8500-00453BM	8" X 36"
S8500-00453D	8" X 48"
S8500-00453E	8" X 60"
S8500-00453F	8" X 72"
S8500-00453J	8" X 78"
S8500-00453GG	8" X 84"
S8500-00453H	8" X 96"



8" Catch Basin Tubes w/ Welded Aluminum Flanges (Vactor® and Vac-Con®)

Available in:

Part#	Size
U25268A	8" X 30"
U25268G	8" X 36"
U25268F	8" X 42"
U25268H	8" X 48"
U25268C	8" X 60"
U25268M	8" X 72"
U25268	8" X 78"
U25268D	8" X 82"
U25268B	8" X 84"
U25268E	8" X 90"
U25268J	8" X 96"
U25268K	8" X 108"
U25268L	8" X 120"

6" Intake Tubes w/ Aluminum Flanges (Vactor® and Vac-Con®)

Available in:

Part#	Size
UA34763L	6" X 24"
UA34763H	6" X 28"
UA34763D	6" X 36"
UA34763C	6" X 48"
UA34763A	6" X 60"
UA34763AA	6" X 72"
UA34763K	6" X 84"
UA34763E	6" X 90"
UA34763G	6" X 96"
UA34763F	6" X 120"
UA34763J	6" X 240"



6" Intake Tube Welded BandLok Ends All Aluminum

Available in:

Part#	Size
S8510-00285	6" X 24"
S8510-00285	6" X 36"
S8510-00286	6" X 48"
S8510-01148	6" X 60"
S8510-01148A	6" X 72"
S8510-01371	6" X 84"
S8510-00287	6" X 96"
S8510-00285A	6" X 120"



6" Intake Tube Riveted Steel Flanges on both Ends All Aluminum

Available in:



Part#	Size
U34763H	6" X 28"
U34763D	6" X 36"
U34763C	6" X 48"
U34763A	6" X 60"
U34763AA	6" X 72"
U34763E	6" X 90"
U34763B	6" X 96"
U34763F	6" X 120"

6" Intake Tube 18"-120" (Aquatech®)

Available in:



Part#	Size
AT150461A	6" X 18"
AT150461	6" X 36"
AT150471	6" X 48"
AT150475	6" X 60"
AT150481	6" X 72"
AT150482	6" X 84"
AT150483	6" X 90"
AT150485	6" X 96"
AT150491	6" X 120"

6" Catch Basin Tubes w/ Riveted Steel Couplers (Aquatech®)

Available in:



Part#	Size
AT150161	6" X 36"
AT150171	6" X 48"
AT150325	6" X 60"
AT150181	6" X 72"
AT150182	6" X 78"
AT150186	6" X 96"
AT150191	6" X 120"

6" Catch Basin Tube Welded Flange & Crown All Aluminum

Available in:



Part#	Size
UA34766	6" X 24"
UA34766D	6" X 30"
UA34766H	6" X 36"
UA34766C	6" X 48"
UA34766J	6" X 60"
UA34766A	6" X 72"
UA34766B	6" X 78"
UA34766G	6" X 90"
UA34766F	6" X 96"
UA34766K	6" X 120"

6" Catch Basin Tube Welded Crown & Male BandLok Ends All Aluminum

Available in:

Part#	Size
S8500-00454	6" X 34"
S8500-00455	6" X 36"
S8510-00287D	6" X 48"
S8510-00287B	6" X 60"
S8510-00455A	6" X 72"
S8510-00287AA	6" X 78"
S8510-00287A	6" X 96"

6" Catch Basin Tube Welded Crown & Female BandLok End All Aluminum

Available in:

Part#	Size
S8510-00287C	6" X 72"
S8510-00287AB	6" X 78"

6" Catch Basin Tube Riveted Steel Flange & Crown Aluminum Tube

Available in:

Part#	Size
U34766-1	6" X 18"
U34766N	6" X 30"
U34766M	6" X 36"
U34766B	6" X 48"
U34766A	6" X 60"
U34766	6" X 78"
U34766E	6" X 84"
U34766G	6" X 90"
U34766F	6" X 96"
U34766D	6" X 120"
U34766L	6" X 180"



6" Flange Tube Welded Hydro Kanaflex End & Flange All Aluminum

Available in:

Part#	Size
UA34763KHE	6" X 84"
UA34763EHE	6" X 90"



6" Intake Tube 18"-120" (Aquatech®)

Available in:



Part#	Size
AT150461A	6" X 18"
AT150461	6" X 36"
AT150471	6" X 48"
AT150475	6" X 60"
AT150481	6" X 72"
AT150482	6" X 84"
AT150483	6" X 90"
AT150485	6" X 96"
AT150491	6" X 120"

Quick Clamp (Vactor)



Available in:

Part#	Size
U17271/46471	5" Quick Clamp
U32087	6" Quick Clamp
U16584	8" Quick Clamp
UV680-0015	8" Quick Clamp J-Hook Style (Vaccon)



Ring Clamp Band-Lok Style

Available in:

Part#	Size
U42586B	3" Ring Clamp
U42586	4" Ring Clamp
U42587	6" Ring Clamp
U42588	8" Ring Clamp



4"-8" King Clamp Used On All Vacuum Machines

Available in:

Part#	Size
U42592	4" King Clamp
U42593	6" King Clamp
U42594	8" King Clamp

12" Intake Clamp (Vac-All)



Available in:

Part#	Size
VE2557-12	12" Intake Clamp

Cuffed Debris Suction Hose

Available in:

Part#	Description:	Size:	Type:
U70404	6" X 34" Cuffed Debris Suction Hose	6" X 34"	Standard
U7320981	8" X 34" Cuffed Debris Suction Hose	8" X 34"	Standard
U46564	8" X 62" Cuffed Debris Suction Hose	8" X 62"	Standard
U46564A	8" X 62" Heavy Duty Cuffed Debris Suction Hose	8" X 62"	Heavy Duty



KanaFlex Style Hose

Kanaflex EPDM Rubber High Temperature Resistant Suction Hose, Black

180AR Style Hose:

Part Number	Size
U43322	4" Bulk (per foot)
U43323	6" Bulk (per foot)
U43716	8" Bulk (per foot)



6"-8" Hose End Weldment (Vactor®)

Available in:

Part#	Size
U53348	6" Hose End Weldment
U58795	8" Hose End Weldment



3"-8" Steel Female BandLok Style Hose End

Available in:

Part#	Size
U42580A	3" Female
U42580	4" Female
U42581	6" Female
U42582	8" Female





6"-8" Hose End Male Hose Shank with Gasket (Aquatech)

Available in:

Part#	Size
AT171160	6" Male Hose Shank
AT171290-HS	8" Male Hose Shank



6"-8" Hose End Female Weld On with Gasket (Aquatech)

Available in:

Part#	Size
AT171230	6" Female Weld On
AT171240	8" Female Weld On



3"-8" Steel Male BandLok Style Hose End

Available in:

Part#	Size
U42583B	3" Male
U42583	4" Male
U42584	6" Male
U42585	8" Male

Kana flex Hose End Clamps

Available in:



Part#	Size
U43784	2" Power Clamp
U44215	2 1/2" Power Clamp
U70846	3" Power Clamp
U43389	4" Power Clamp
U43415	6" Power Clamp
U43388	8" Power Clamp
U45739	10" Power Clamp
U45606	12" Power Clamp



Hydro-Excavation Trigger Assembly

The Hydro-Excavation Trigger Assembly includes a vertically angled 4,500 PSI/32 GPM rated trigger assembly with a 90° Stainless Steel QD Hose Connection, 5' X 1/2" Stainless Steel Lance with Adjustable Side-Handle, the Industry Leading Ripsaw Rotating Nozzle with Tungsten Carbide Internal Parts for longer durability and a more aggressive digging capability.



Rip Saw Nozzles

Ripsaw Rotating Turbo Nozzle – 3200 PSI

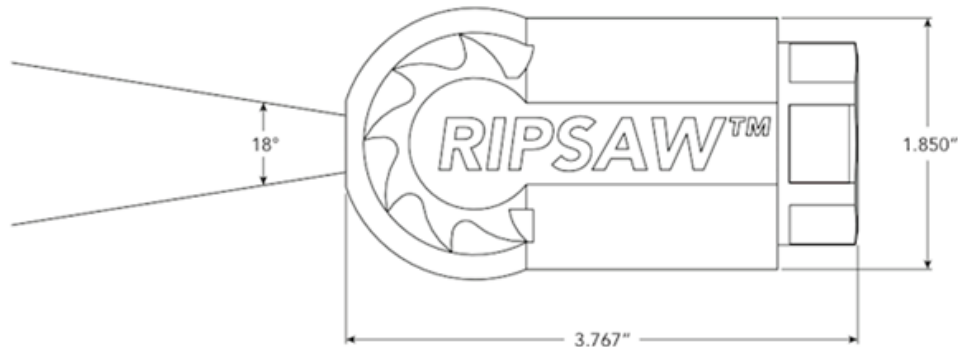
Dig Faster. Save Water.

The Ripsaw Rotating Turbo nozzle is specifically designed and engineered for the rugged Hydro-Excavation industry. It's cone shaped flow pattern is ideal for potholing applications.

- Performance – Complete jobs faster with less runtime and less downtime. The RIPSAW blasts a 0° straight water stream at up to 3200 PSI while rotating at a high speed to provide an 18° cone of coverage.
- Durability – These heavy duty, high impact nozzles are constructed with a stainless steel housing and tungsten carbide wear surfaces to withstand harsh environments and provide longer life than ceramic nozzles. Repair kits are also available for extended life and lower operating costs.
- Safety – Non-conductive urethane coating on the nozzle body protects the operator and sensitive underground utilities.
- Efficiency– Greater impingement allows you to use a smaller nozzle size while getting the same impact as nozzles with higher GPM flow rates.



ROTATING HYDRO-EXCAVATION NOZZLE

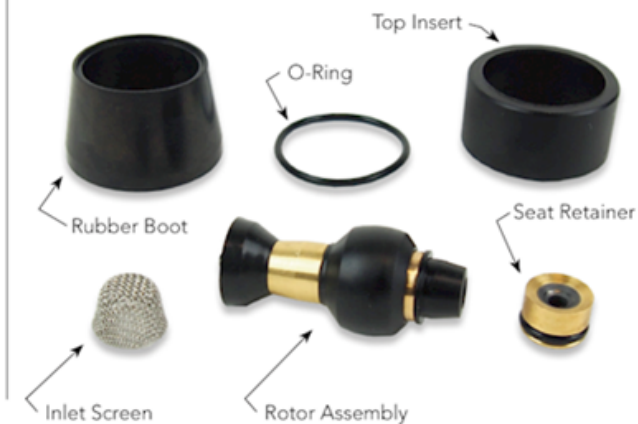


NOZZLE SIZE	NOZZLE PART NUMBER	REPAIR KIT PART NUMBER	FLOW RATE CHART (GPM)					
			@ 1000 PSI	@ 1500 PSI	@ 2000 PSI	@ 2500 PSI	@ 3000 PSI	@ 3200 PSI
3.0	1001857-030	1001858-030	1.5 GPM	1.8 GPM	2.1 GPM	2.4 GPM	2.6 GPM	2.7 GPM
4.0	1001857-040	1001858-040	2.0 GPM	2.4 GPM	2.8 GPM	3.2 GPM	3.5 GPM	3.6 GPM
5.0	1001857-050	1001858-050	2.5 GPM	3.1 GPM	3.5 GPM	4.0 GPM	4.3 GPM	4.5 GPM
6.0	1001857-060	1001858-060	3.0 GPM	3.7 GPM	4.2 GPM	4.7 GPM	5.2 GPM	5.4 GPM
8.0	1001857-080	1001858-080	4.0 GPM	4.9 GPM	5.7 GPM	6.3 GPM	6.9 GPM	7.2 GPM
10.0	1001857-100	1001858-100	5.0 GPM	6.1 GPM	7.1 GPM	7.9 GPM	8.7 GPM	8.9 GPM
12.0	1001857-120	1001858-120	6.0 GPM	7.3 GPM	8.5 GPM	9.5 GPM	10.4 GPM	10.7 GPM

SPECIFICATIONS:

- Minimum Inlet Pressure: 1,000 PSI (69 bar)
- Maximum Inlet Pressure: 3,200 PSI (220 bar)
- Maximum Water Temperature: 180°F (+82°C)
- Housing Material: Stainless Steel
- Coating Material: Urethane
- Nozzle Tip Material: Tungsten Carbide
- Inlet Connection Thread: 1/2" FNPT

REPAIR KIT INCLUDES:



680 East Travelers Trail • Burnsville, MN 55337

T: 952-808-3640 • F: 952-808-3650 • www.hydrflexinc.com • info@hydrflexinc.com

P/N 3001208 revD0115



MACHETE™ LINEAR OSCILLATING NOZZLE

Straighter lines. Cleaner holes. Penetrating faster.

The Machete™ is a premium oscillating tool and the first of its kind in the hydro-excavation market. By moving water in an oscillating motion combined with a smaller spray angle, the direct stream provides a more forceful flow and impact. It's the perfect nozzle to give you the cutting power and penetration of a straight tip and the movement of a rotating tip. Whether it's trenching or cutting through compact soils, the Machete acts as a finishing tool for any job. By creating a crisp straight edge, while not undermining itself, the Machete provides a safer top surface environment.

Superior Performance – Blasts a 0-degree oscillating water stream at an optimal speed creating a 15-degree wedge of powerful flow that will allow you to dig faster and save water in the hardest and most compact soil types.

Rugged and Replaceable – constructed of stainless steel housing and tungsten carbide to withstand harsh environments. A replaceable cover extends the life of your nozzle!

Safety – Reduces undermining for safer operating use.

Efficient – allows you to cut deeper to complete faster.

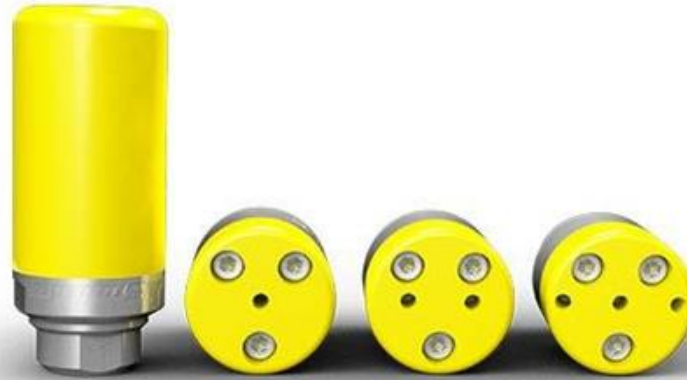
Be prepared to tackle your toughest jobs.



Turbo Nozzles (Giant)

This nozzle (with plastic two-piece cover) allows one to have the benefit of a 0° stream of water in a 20° spray pattern. This gives the user a greater ability to do work than with either a straight 0° nozzle or a wide angle flat stream nozzle. The nozzle is normally attached to the end of a lance or spray bar. The nozzle consists has a brass housing with a ceramic rotor nozzle. Available in ¼" or ½" sizes.

Part Number:	Nozzle Size:	Max GPM:	Pressure Rating:
22060A-10.0	10.0	8.0	5800 PSI
22060A-12.0	12.0	8.0	5800 PSI



Hydro-X

Hydro Excavation is a safe alternative for providing access to buried utilities by potholing or trenching with high pressure water. StoneAge now has four options available for different applications.

- Angled rotating jet pattern on rotary model removes more material and safely cleans around utilities
- Save labor hours and expensive heavy equipment costs
- Avoid risks of costly and dangerous damage to existing utilities
- Replaceable shroud made from UHMW
- Rebuild kits available

Model	HX-101	HX-102	HX-103S
Maximum Pressure	5k psi	5k psi	5k psi
Maximum Flow	12 gpm	12 gpm	12 gpm
Inlet Connection	1/2 NPT	1/2 NPT	1/2 NPT
Nozzle	1 x OC1H Carbide	2 x AP2 Attack Tip	3 x AP2 Attack Tip



Switchblade

Switchblade™ Static, Zero-Degree Nozzle – 3200 PSI

Dig Faster. Save Water.

The Switchblade™ nozzle is designed and engineered for the rugged Hydro-Excavation industry. These heavy-duty, high-impact nozzles allow you to cut through dirt faster while using dramatically less water.

Performance – Complete jobs faster with more runtime and less downtime. A combination of (1), (2), or (4) 0° solid stream nozzles provide greater impingement, allowing you to cut through soil faster while using dramatically less water. The Switchblade's long, linear flow path is ideally suited for trenching applications.

Durability – These heavy duty, high impact nozzles are constructed with stainless steel housings and tungsten carbide wear surfaces to withstand harsh environments and provide longer life than stainless steel nozzle tips.

Safety – Non-conductive urethane coating on the nozzle body protects the operator and sensitive underground utilities.

Flexibility – Individual, replaceable, color-coded nozzle pills allow you to change water flow rate and pattern based on current soil conditions.

SWITCHBLADE™

STATIC, ZERO-DEGREE HYDRO-EXCAVATION NOZZLE

CUSTOMIZE YOUR NOZZLE

Select nozzle body and 1, 2, or 4 nozzle pills or plugs depending on which body you chose.

PART NUMBER	DESCRIPTION	COLOR	CONNECTION THREAD	FLOW RATE (EACH PILL) (GPM)					
				@ 1000 PSI	@ 1500 PSI	@ 2000 PSI	@ 2500 PSI	@ 3000 PSI	@ 3200 PSI
1002036	Switchblade Ace Body - 1 Pill Port	-	1/2" NPT Inlet, 30 Mesh Screen	-	-	-	-	-	-
1002035	Switchblade Deuce Body - 2 Pill Ports	-	1/2" NPT Inlet, 30 Mesh Screen	-	-	-	-	-	-
1001779	Switchblade Quad Body - 4 Pill Ports	-	1/2" NPT Inlet, 30 Mesh Screen	-	-	-	-	-	-
1001780-010	1.0 Nozzle Pill	Blue	1/8" NPT	0.5 GPM	0.6 GPM	0.7 GPM	0.8 GPM	0.9 GPM	0.9 GPM
1001780-020	2.0 Nozzle Pill	Yellow	1/8" NPT	1.0 GPM	1.2 GPM	1.4 GPM	1.6 GPM	1.7 GPM	1.8 GPM
1001780-030	3.0 Nozzle Pill	Green	1/8" NPT	1.5 GPM	1.8 GPM	2.1 GPM	2.4 GPM	2.6 GPM	2.7 GPM
1001780-040	4.0 Nozzle Pill	Orange	1/8" NPT	2.0 GPM	2.4 GPM	2.8 GPM	3.2 GPM	3.5 GPM	3.6 GPM
1001780-050	5.0 Nozzle Pill	Purple	1/8" NPT	2.5 GPM	3.1 GPM	3.5 GPM	4.0 GPM	4.3 GPM	4.5 GPM
1001780-060	6.0 Nozzle Pill	Red	1/8" NPT	3.0 GPM	3.7 GPM	4.2 GPM	4.7 GPM	5.2 GPM	5.4 GPM
1001780-080	8.0 Nozzle Pill	Black	1/8" NPT	4.0 GPM	4.9 GPM	5.7 GPM	6.3 GPM	6.9 GPM	7.2 GPM
1001780-100	10.0 Nozzle Pill	White	1/8" NPT	5.0 GPM	6.1 GPM	7.1 GPM	7.9 GPM	8.7 GPM	8.9 GPM
1001780-120	12.0 Nozzle Pill	Pink	1/8" NPT	6.0 GPM	7.3 GPM	8.5 GPM	9.5 GPM	10.4 GPM	10.7 GPM
3000795	SST Plug	-	1/8" NPT	-	-	-	-	-	-

OR CHOOSE A NOZZLE KIT

PART NUMBER	DESCRIPTION	FLOW RATE (TOTAL KIT) (GPM)					
		@ 1000 PSI	@ 1500 PSI	@ 2000 PSI	@ 2500 PSI	@ 3000 PSI	@ 3200 PSI
1001927	2222 Nozzle Kit - Includes Switchblade Quad Body, (4) 2.0 Nozzle Pills, And Stainless Steel Thread Tape	4.0 GPM	4.9 GPM	5.7 GPM	6.3 GPM	6.9 GPM	7.2 GPM
1001928	2332 Nozzle Kit - Includes Switchblade Quad Body, (2) 2.0 Nozzle Pills, (2) 3.0 Nozzle Pills, And Stainless Steel Thread Tape	5.0 GPM	6.1 GPM	7.1 GPM	7.9 GPM	8.7 GPM	8.9 GPM
1001929	3443 Nozzle Kit - Includes Switchblade Quad Body, (2) 3.0 Nozzle Pills, (2) 4.0 Nozzle Pills, And Stainless Steel Thread Tape	7.0 GPM	8.6 GPM	9.9 GPM	11.1 GPM	12.1 GPM	12.5 GPM

SPECIFICATIONS:

- Maximum Inlet Pressure: 3,200 PSI (220 bar)
- Maximum Water Temperature: 180°F (+82°C)
- Housing Material: Stainless Steel
- Coating Material: Urethane
- Nozzle Tip Material: Tungsten Carbide
- Nozzle Dimensions:
 - Switchblade Ace™ 3.4" L x 2" W
 - Switchblade Deuce™ 3.4" L x 2" W
 - Switchblade Quad™ 3.4" L x 3.4" W

COLOR-CODED NOZZLE PILLS:



*Stainless steel thread tape required for pill assembly (included).

680 East Travelers Trail • Burnsville, MN 55337

T: 952-808-3640 • F: 952-808-3650 • www.hydrflexinc.com • info@hydrflexinc.com

3001207 rev10915



Vac Truck Zip Tube

Forget traditional excavation methods—let Zip Tubes do the work for you! These high-powered hydro erosion and excavation nozzles use pressurized water to do the digging, minimizing the costly risk of cutting through underground utilities. Simply connect its 1" FPT swivel connection to your water line. The Zip Tube uses an external steel water ring with 12 stainless steel replaceable jets to pulverize through soil. It then sucks up the debris using a vacuum system (not included).

All Zip Tubes are constructed of a 0.1"-walled 8"-dia x 71"-long Tuff Tube™. The handle adjusts up to 39", while a rubber bump stop protects the jets from rocks, debris and underground services. A rubber safety tube attached to the water ring helps control the spray, protecting you from debris splatter. Choose from three connection options to best suit your application. Each model weighs 45 lbs.

UEMSI Part#

UEMSI Part#	Size/Description:
ZIP-A-6"	Tube w/ 6" female Aquatech connection
ZIP-A	Tube w/ 8" female Aquatech connection
ZIP-F-6"	Tube w/ 6" Vactor flange connection
ZIP-F	Tube w/ 8" Vactor flange connection
ZIP-F-6"/8"	Tube 6" w/8" Vactor flange connection
ZIP-SP-6"	Tube w/ 6" female Super Products Bandlock
ZIP-SP	Tube w/ 8" female Super Products Bandlock
U40797L	Replacement jet - Straight Angle
U40797L-10	Replacement jet - 10° Angle



RAM Swivels

RAM Swivels Straight and 90°.

Available in:

Part#	Size:	Type:
U40052A	3/4" RAM 90° Swivel	90°
U40052	1" RAM 90° Swivel	90°
U43947	1 1/4" RAM 90° Swivel	90°
U40052B	3/4" RAM Straight Swivel	Straight
U40052C	1" RAM Straight Swivel	Straight

RAM Swivel Repair Kits



RAM Swivel Repair Kits

Available in:

Part#	Size:
U40375	3/4" & 1" RAM Swivel Packing Seal Kits
U40052	1 1/4" RAM Swivel Packing Seal Kits
U43947	3/4" & 1" RAM Swivel Bearing Kits
U40052B	1 1/4" RAM Swivel Bearing Kits

Float Ball



Available in:

Part#

S7300-01935

S3000-01395

S3000-01406

U44388

U44388A

Size:

6" Diameter 18 Gauge

8" Diameter 18 Gauge

9" Diameter 18 Gauge

10" Diameter 18 Gauge

12" Diameter 14 Gauge

Float Ball 1/2" Rod Bore



Available in:

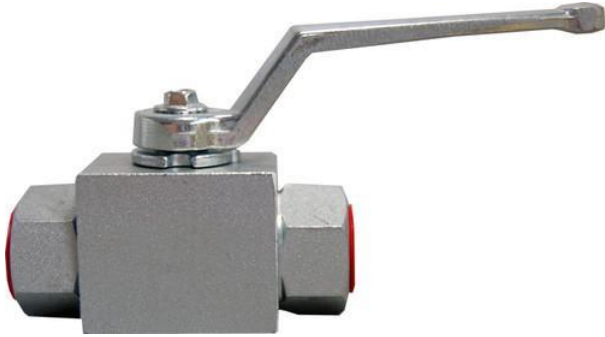
Part#

U45113

Size:

6" Diameter 1/2" Rod Bore

Hycon Two-Way Ball Valves



Hycon Two-Way Ball Valves

Available in:

Part#	Size:	PSI:
U42446HY	1/4" Hycon Two-Way	3000
U40575HY	1/2" Hycon Two-Way	3000
U40575C	3/4" Hycon Two-Way	3000
U40576HY	1" Hycon Two-Way	4500

Hycon Three-Way Ball Valves



Hycon Three-Way Ball Valves and Repair Kit

Available in:

Part#	Size:	PSI:
U44535	3/8" Hycon Three-Way	5000
AT130890	1/2" Hycon Three-Way	5000
AT130925	3/4" Hycon Three-Way	5000
AT130920	1" Hycon Three-Way	5000

Apollo Two-Way Ball Valve



Available in:

Part#	Size:	PSI:
S6000-010293	1/2" Apollo Two-Way	2000
S6000-00681A	3/4" Apollo Two-Way	2000
S6000-00681	1" Apollo Two-Way	2000
S6000-00681B	1 1/4" Apollo Two-Way	2000

Ball Valve Repair Kits

Available in:



Part#	Size and Type:
U43955	1" Dynaquip Style Ball Valve
AT191290	1/2" 3-Way Ball Valve
U43941HYS	1 1/4" 2-Way Ball Valve
U40576A	1" 2-Way Ball Valve
U40575HYS	1/2" 2-Way Ball Valve
AT1815	1" 2 & 3-Way Ball Valve
AT1820	3/4" 2 & 3-Way Ball Valve
AT1840	1 1/4" 3-Way Ball Valve



Brass Lever Valve

Product Description

Female NPT x Female NPT

Quick Opening Lever Action

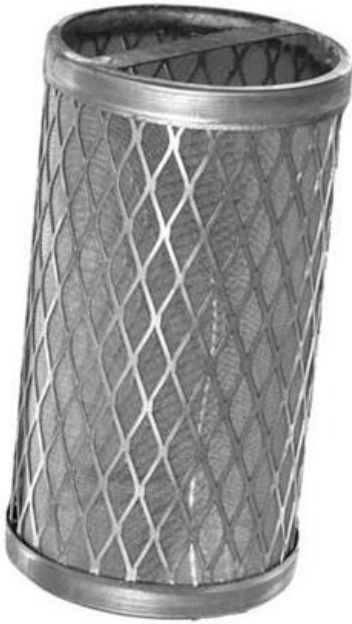
22-45 PSI Rating

Available in Sizes Ranging from 4-6 inches

Durable Brass Construction

Available in:

Seattle Pump Part#	Size:	PSI:
GV.4	4" Brass	22-45 PSI
GV.6	6" Brass	22-45 PSI



Vactor Filter Screens

Vactor Filter Screens

Available in:

Part#	Size
U41280	3"
U45803	2"



Aquatech Filter Screens

Aquatech Filter Screens

Available in:

Part#	Size
AT235233	2 1/4" X 3 1/2"

Water Fill/Hydrant Hoes Assembly

Water Fill/Hydrant Hoes Assembly. Assembly Includes Male and Female Ends with Clamps. Also Available in Bulk.

Available in:



Part#	Type:	Size
U20720K-A	Assembly	2 1/2" X 10'
U20720F-A	Assembly	2 1/2" X 15'
U20720G-A	Assembly	2 1/2" X 20'
U20720A-A	Assembly	2 1/2" X 25'
U20720H-A	Assembly	2 1/2" X 30'
U20720D-A	Assembly	2 1/2" X 50'
U20720E-A	Assembly	2 1/2" X 60'
U20720K	Bulk	2 1/2" X 10'
U20720F	Bulk	2 1/2" X 15'
U20720G	Bulk	2 1/2" X 20'
U20720A	Bulk	2 1/2" X 25'
U20720H	Bulk	2 1/2" X 30'
U20720D	Bulk	2 1/2" X 50'
U20720E	Bulk	2 1/2" X 60'
U20720Z	Bulk	2 1/2" X 100'



Water fill hose male coupling

Water fill hose male coupling

Available in:

Part#	Size
U20199A	2-1/2" Male Coupling
U20199B	2-1/2" Female Coupling
U41487	2-1/2" Female Coupling Gasket
U20695Z	Fill Hose Clamp
U-189	Hydrant Wrench Adjustable

Blue Nylon Discharge Hose

Available in:



Part#	Size:
U29898	Bulk Hose (per foot)
U29898A	6" X 5'
U29898B	6" X 8'
U29898C	6" X 10'
U29898E	6" X 15'
U29898F	6" X 20'
U29898G	6" X 25'
U29898H	6" X 50'
U29898N	6" X 100'

Footage Counters

Available in:



Part#	Description:	Type:
30-0990-100	Universal Footage Counter Used on Aquatech, F.E Meyers and Super Products Sewer Machines. Replacement for UEMSI Hose Level Wind	Universal
SRE30173	Footage Counter Used on SRECO Cleaning and Rodding Machines	SRECO
U45054	Right Hand Footage Counter Used on Vector 1988 and Newer (B) Machines	Right/Vector

Throttle Cable

Available in:

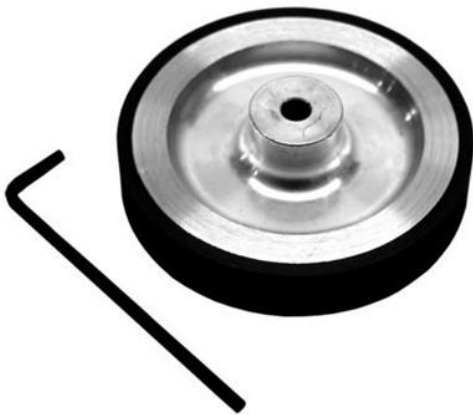
Part#	Description:	Size:
U44876-5	5' Throttle Cable	5'
U44876-6	6' Throttle Cable	6'
U44876-8	8' Throttle Cable	8'
U44876-10	10' Throttle Cable	10'
U44876-12	12' Throttle Cable	12'
U44876-14	14' Throttle Cable	14'
U44876-15	15' Throttle Cable	15'
U45440	18' Throttle Cable	18'
U44876-22	22' Throttle Cable	22'



Replacement Wheel

Available in:

Part#	Description:
U45046	Used on Vactor 1988 and Newer
U40867	Used on Vactor 1987 and Older (D)





Vacuum Gauge

Vacuum Gauge

Available in:

Part#

U42645

Description:

Vacuum Gauge 0-30"



Air Pressure Gauge

Air Pressure Gauge

Available in:

Part#

S6000-00410

Description:

Air Pressure Gauge 0-160 PSI



Sewer Machine Door Gaskets

Available in:

Part#	Description:	Size:	Type:
U20133C	48" P Style	48"	P Style
U20133A	59 1/2" P Style	59 1/2"	P Style
U20133B	79 1/2" P Style	79 1/2"	P Style
U20133K	94" P Style	94"	P Style
U20133J	122" P Style	122"	P Style
U20133H	285" P Style	285"	P Style
U20133D	305" P Style	305"	P Style
U20133G	332" P Style	332"	P Style
S3500-00200	Full Door-Tailgate Seal		Super Products Machines
S3500-00275*	Half Door-Tailgate Seal		Super Products Machines
U35594N	40" D Style	40"	D Style
U35594C	64" D Style	64"	D Style

U35594A	70" D Style	70"	D Style
U35594B	88" D Style	88"	D Style
U35594K	91" D Style	91"	D Style
U35594O	168" D Style	168"	D Style
U35594M	196" D Style	196"	D Style
U35594G	230" D Style	230"	D Style
U35594	255" D Style	255"	D Style
U35594L	258" D Style	258"	D Style
U35594F	325" D Style	325"	D Style
U35594H	360" D Style	360"	D Style

Pendant Control Box 7-8 Button Long Yellow



Pendant Control Box 7-8 Button Long Yellow

Available in:

Part#	Description:	Type:
U44861JA	7 Button 20' Cord	Long Yellow Box
U44861J	7 Button 30' Cord	Long Yellow Box
U44861L	7 Button 35' Cord	Long Yellow Box
S5500-00843	8 Button No Cord	Long Yellow Box
AT121952	8 Button 30' Cord	Long Yellow Box

5 Button Yellow Pendant Control Box



5 Button Yellow Pendant Control Box

Available in:

Part#	Description:	Type:
U54219B	5 Button 20' Cord	Yellow Square Box
U54219E	5 Button 50' Cord	Yellow Square Box
U54219	5 Button 15' Cord	Yellow Square Box
U54219A	5 Button 30' Cord	Yellow Square Box
U54219C	5 Button No Cord	Yellow Square Box



7 Button Pendant Control Box

Available in:

Part#	Description:	Type:
U44861A	7 Button No Cord	Black Square Box
U44861B	7 Button 10' Cord	Black Square Box
U44861C	7 Button 15' Cord	Black Square Box
U44861D	7 Button 20' Cord	Black Square Box
U44861E	7 Button 50' Cord	Black Square Box
U54219B	5 Button 20' Cord	Yellow Square Box
U54219E	5 Button 50' Cord	Yellow Square Box
U54219	5 Button 15' Cord	Yellow Square Box
U54219A	5 Button 30' Cord	Yellow Square Box
U54219C	5 Button No Cord	Yellow Square Box
U54219D	5 Button 25' Cord	Yellow Square Box
U44861JA	7 Button 20' Cord	Long Yellow Box
U44861J	7 Button 30' Cord	Long Yellow Box
U44861L	7 Button 30' Cord	Long Yellow Box
S5500-00843	8 Button No Cord	Long Yellow Box
AT121952	8 Button 30' Cord	Long Yellow Box



Pendant Control Kill Switch Boot

Available in:

Part#	Description:	Type:
U43808	Boot, Long Switch	Long
U44869	Boot, Short Switch-Red	Short
U53003	Boot, Short Switch	Short

Pendant Control Kill Switch



Available in:

Part#	Description:	Type:
U43809	4 Prong Pendant Control Kill Switch	4 Prong
U44867	2 Prong Pendant Control Kill Switch	2 Prong

Myers Pressure Regulator



Available in:

Part#	Size
FE15696C2	10-60 GPM 1200 PSI
FE15696C5	25-70 GPM 2000 PSI

F.E. Meyers Plunger Cups



Available in:

Part#	Size
FE13046A14	C2 Plunger Cup
FE13046A11	C5 Plunger Cup